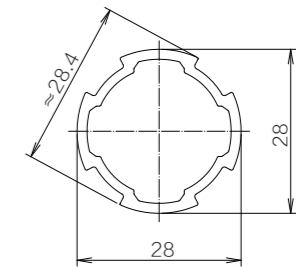


28mm Aluminum tube series

28mm Aluminum tube series

Basic aluminum pipe



- The 28 series universal standard aluminum tubes, which balance functionality and strength, are the basic products applied to the main structure.
- Yellow base aluminum tubes are used for specific locations and protective barriers for warning or isolation purposes, and can also be applied to personalized main structural products.

model

name	Basic aluminum pipe	Yellow base aluminum tube
model	SQ-A01	SQ-A02
Product unit weight	372g/m	390g/m
Packaging quantity	16(set)	
long	4(m)	
material	aluminum alloy 6005T6	

Related accessories

Foundation top cover	SQ-E02
Foot cover	SQ-E03
Rubber foot cover	SQ-E20
Metal top cover	SQ-D08

28mm aluminum tube

28mm Connector

28mm metal fitting

28mm Non-metallic accessories

43mm product

Fluency bar

Castor foot cup

Module components

Application

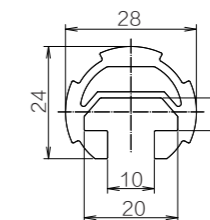
Scenario Case

Reference

Technical Parameter

Quality regulations matters needing attention

T-groove Aluminum Tube



specifications

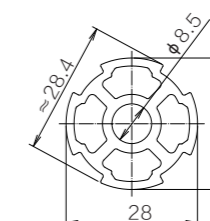
model	SQ-A03
long	4(m)
Product unit weight	620g/m
Packaging quantity	10(set)
material	aluminum alloy 6005T6

Related accessories

T-groove top cover	SQ-E12
T-shaped slider 3	SQ-D74
T-shaped slider 4	SQ-D75

- The opening part of the product is equipped with a T-shaped slider, which can be used to install casters or other functional parts that match the T-shaped slider. The groove can be used for positioning and for the track of the roller.

Reinforced Aluminum Pipe



specifications

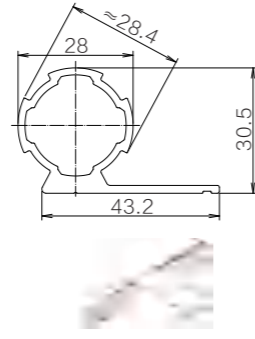
model	SQ-A04
long	4(m)
Product unit weight	601g/m
Packaging quantity	10(set)
material	aluminum alloy 6005T6

Related accessories

Strengthening the top cover	SQ-E11
Screw wheel	SQ86
Peduncle	SQ88

- The bending strength is about twice that of the basic aluminum pipe. The end face can be machined with M10 threaded holes, and accessories such as foot cups can be installed. It can also be converted into M6 threads using internal and external screws, and accessories such as concave and convex guide wheels can be installed on the end face.

Unilateral aluminum tube



■ specifications

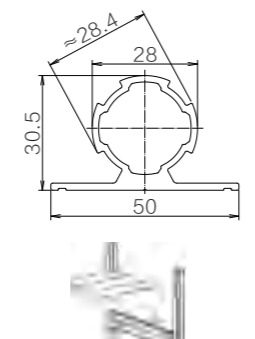
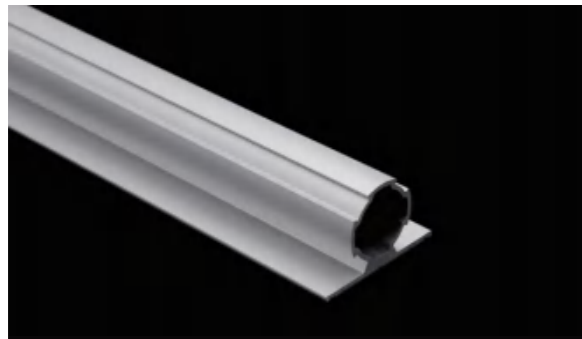
model	SQ-A05
long	4(m)
Product unit weight	612g/m
Packaging quantity	10(set)
material	aluminum alloy 6005T6

■ Related accessories

Foundation top cover	SQ-E02
Metal top cover	SQ-D08

● The flat part can be installed with a back mounted parts box, and can also be used as a barrier or partition.

Bilateral Aluminum Tube



■ specifications

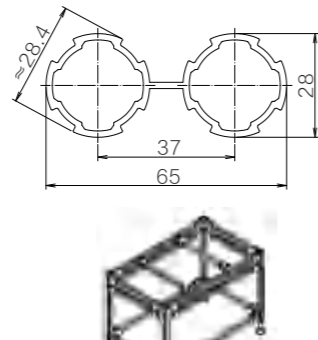
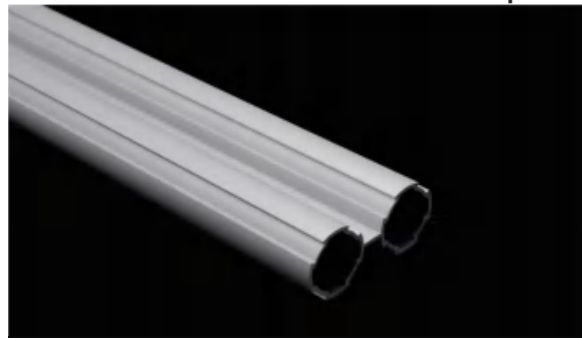
model	SQ-A06
long	4(m)
Product unit weight	646g/m
Packaging quantity	10(set)
material	aluminum alloy 6005T6

■ Related accessories

Foundation top cover	SQ-E02
Metal top cover	SQ-D08

● Form a T-shaped plane with the center of the aluminum tube, and the flat part can be installed with a large-sized back mounted parts box, or used for edge blocking and load-bearing structures.

Double Base Aluminum Pipe



■ specifications model

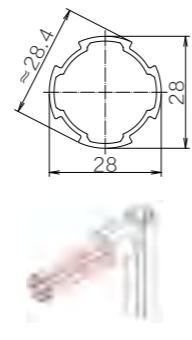
model	SQ-A07
long	4(m)
product unit weight	780g/m
packaging quantity	8(set)
material	aluminum alloy 6005T6

■ Related accessories

Foundation top cover	SQ-E02
Metal top cover	SQ-D08

● Suitable for structural parts that require higher strength, when used longitudinally, the bending strength is about 10 times that of the basic aluminum pipe.

Base Aluminum Tube (thin wall)



■ specifications model

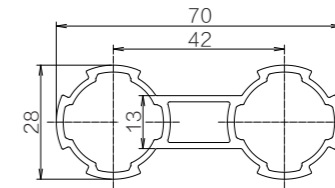
model	SQ-A08
long	4(m)
product unit weight	300g/m
packaging quantity	16(set)
material	aluminum alloy 6005T6

■ Related accessories

Thin wall top cover	SQ-E10
---------------------	--------

● Suitable for the main structure of lightweight products or for non load-bearing parts.

Double Base Aluminum Tube B



■ specifications

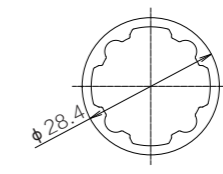
model	SQ-A09
long	4(m)
product unit weight	905g/m
packaging quantity	6(set)
material	aluminum alloy 6005T6

■ Related accessories

Foundation top cover	SQ-E02
Metal top cover	SQ-D08

● The center spacing is increased by 5mm compared to the double base aluminum pipe, and the spacing is the same as the 90° cross joint and parallel joint A, which can avoid interference between the installation of linear rolling components and the beam connection.

Roll Shaft Round Aluminum Tube



■ specifications

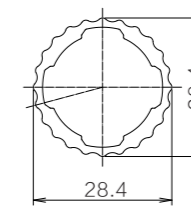
model	SQ-A10
long	4(m)
product unit weight	500g/m
packaging quantity	10(set)
material	aluminum alloy 6005T6

■ Related accessories

Metal top cover	SQ-D08
-----------------	--------

● Installing rotating components on both sides can be used for roller shafts or in situations where there is no need for aluminum tube appearance with grooves.

Roll Shaft Corrugated Aluminum Tube



■ specifications

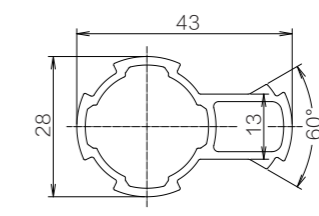
model	SQ-A11
long	4(m)
product unit weight	471g/m
packaging quantity	10(set)
material	aluminum alloy 6005T6

■ Related accessories

Metal top cover	SQ-D08
-----------------	--------

● Installing rotating components on both sides can be used for roller shafts, as well as for turnover boxes or other workpieces that require sliding on aluminum tubes.

Aluminum Tube With Slot



■ specifications

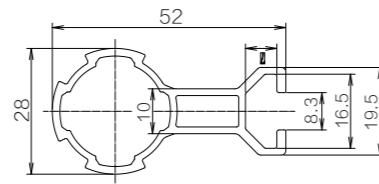
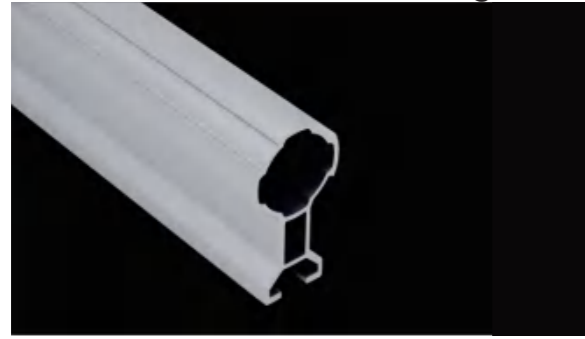
model	SQ-A12
long	4(m)
product unit weight	550g/m
packaging quantity	10(set)
material	aluminum alloy 6005T6

■ Related accessories

Foundation top cover	SQ-E02
Metal top cover	SQ-D08

● The installation of linear rolling components can be arbitrarily connected at the protruding part of the card slot, increasing the rigidity of the track.

Aluminum Tube With T-groove

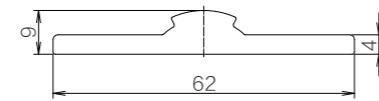
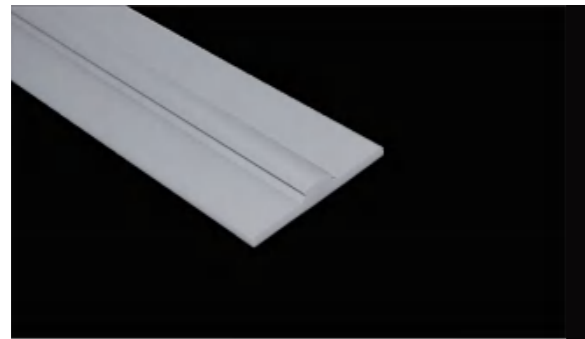


specifications model	
model	SQ-A13
long	4(m)
product unit weight	630g/m
packaging quantity	10(set)
material	aluminum alloy 6005T6

Related accessories	
Foundation top cover	SQ-E02
Metal top cover	SQ-D08
T-shaped slider 1	SQ-D72
T-shaped slider 2	SQ-D73

● After installing the linear rolling component, a T-shaped groove can be used to install the panel or other accessories.

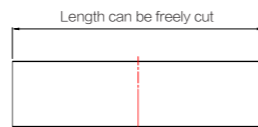
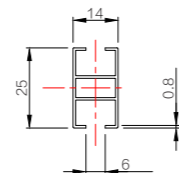
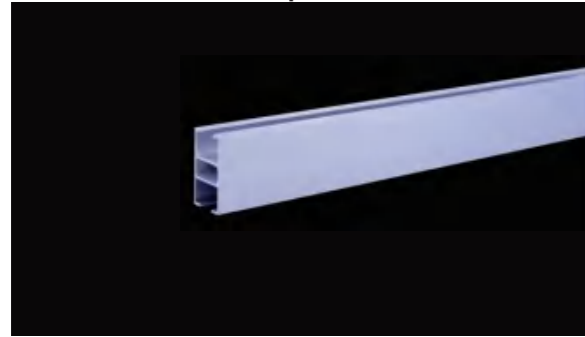
Flange Aluminum



specifications model	
model	SQ-A14
long	4(m)
product unit weight	830g/m
packaging quantity	8(set)
material	aluminum alloy 6005T6

● Add a buckle for the connecting piece on the 4mm flat material, which can be connected to other aluminum pipes at will, and can be processed for punching, expanding the scope of use.

Aluminum Strip Of SQrocess Card

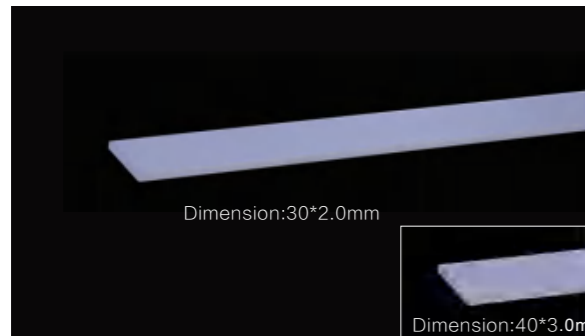


specifications model	
model	SQ-A23
material	aluminum alloy
product unit weight	161g/m
packaging quantity	/
Package size	/
long	6m

Related accessories	
Process card aluminum strip connector	SQ-C01
Process card aluminum strip cover	SQ-E36

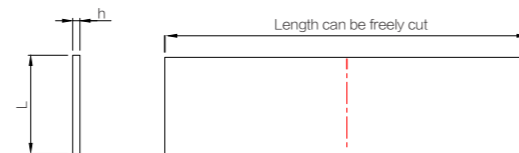
● It is often installed in front of the workbench to place instructions, signs, etc.

Flat Aluminum



Dimension:30*2.0mm

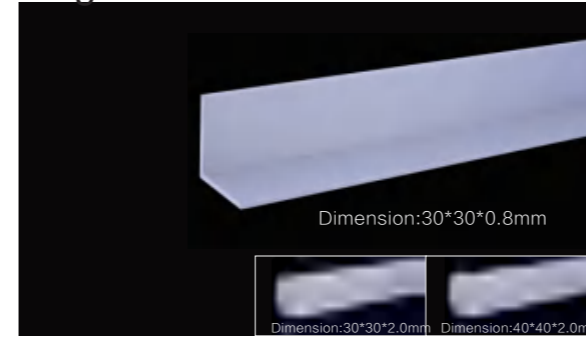
Dimension:40*3.0mm



Form Attachment		
Dimension	30*2.0mm	40*3.0mm
model	SQ-A24	SQ-A25
product unit weight	32g/m	64g/m
packaging quantity	/	/
Package size	/	/
length	6m	6m

● Suitable for mounting screw boxes and smooth edge blocking.

Angular Aluminum

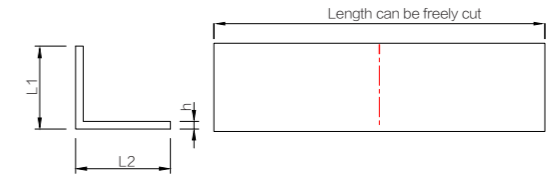


Dimension:30*30*0.8mm

Dimension:30*30*2.0mm

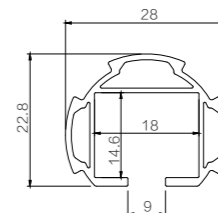
Dimension:40*40*2.0mm

● Suitable for edge blocking on countertops or sloping panels.



Specification and model			
Dimension	30*30*0.8mm	30*30*2.0mm	40*40*2.0mm
model	SQ-A26	SQ-A27	SQ-A28
product unit weight	30g/m	67g/m	81g/m
packaging quantity	/	/	/
Package size	/	/	/
long	6m	6m	6m

Electric Batch Aluminum Tube

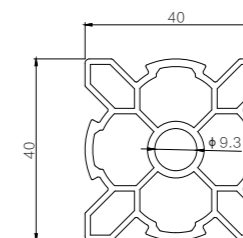


specifications	
model	SQ-A29
length	4(m)
product unit weight	337g/m
packaging quantity	16set
material	aluminum alloy 6005T6

Related accessories	
Electric screwdriver pulley	SQ-D104
Electric screwdriver pulley hook	SQ-D105
External direct connector	SQ-B01

● Used for lifting spring balancer and electric screwdriver above the workbench.

Lean Aluminum Profile

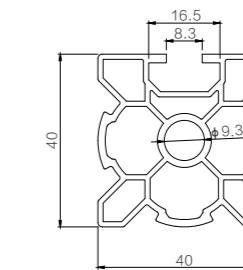
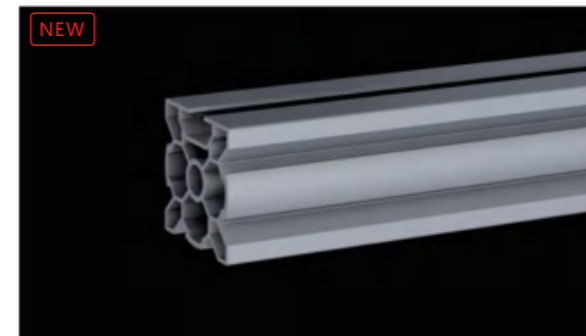


specifications	
model	SQ-A30
length	4(m)
product unit weight	/
packaging quantity	/
material	aluminum alloy 6005T6

Related accessories	
Lean aluminum profile cover	SQ-E34

● Used as the main framework for Taiwan vehicles or equipment, suitable for application scenarios with high load-bearing requirements.

Lean Aluminum Profile

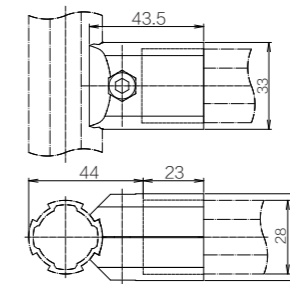
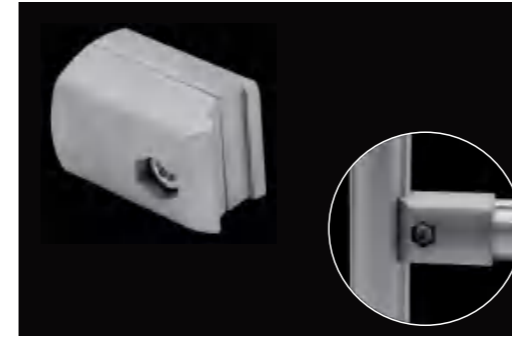


specifications	
model	SQ-A31
length	4米(m)
product unit weight	/
packaging quantity	/
material	aluminum alloy 6005T6

Related accessories	
Lean aluminum profile cover	SQ-E34

● Used as the main framework for Taiwan vehicles or equipment, suitable for application scenarios with high load-bearing requirements.

External Direct Head



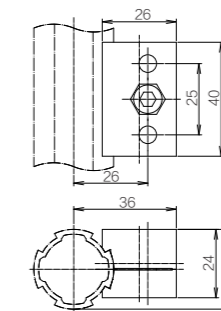
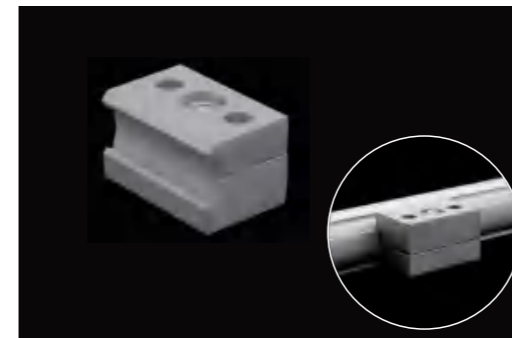
● The basic external joint of the 90 ° structure is the main connecting member of the frame structure (it can also be installed on the outer wall buckle of the 43mm pipe).

specifications

model	SQ-B01
material	aluminum alloy ADC-12
product unit weight	58g/set
packaging quantity	168set
packaging weight	10.7kg
packaging size	300*220*150(mm)

- Supporting accessories**
- Hexagon socket round head screw (strength grade 8.8) M6x20, S=5, K=6, galvanized.
 - Hexagon nut (strength grade 8.8) M6, M=7, S=10, galvanized.

Double Hole Function Accessory

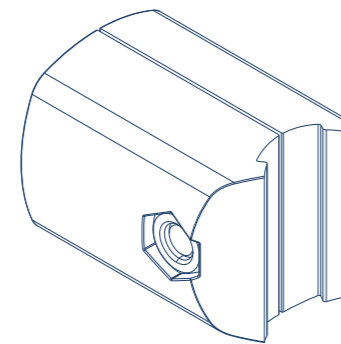


● Comes with two M6 installation holes, with a standard hole spacing of 25mm. The thickness of the product application surface is different, and one side forms a horizontal plane with the aluminum pipe. The intersection of the two sets of products can form a cross positioning at any angle (it can also be installed on the outer wall buckle of the 43mm pipe).

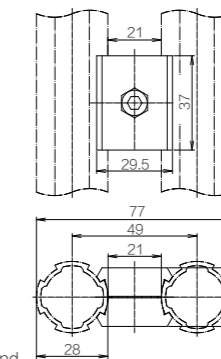
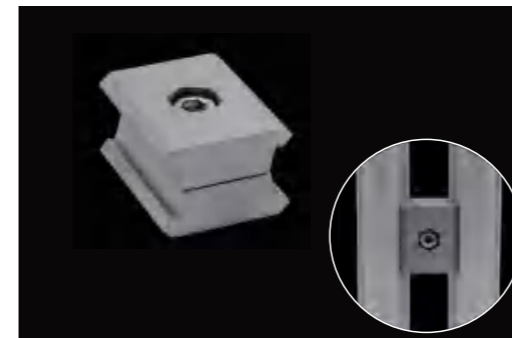
specifications

model	SQ-B02
material	aluminum alloy ADC-12
product unit weight	58g/set
packaging quantity	336set
packaging weight	19.6kg
packaging size	300*220*170mm

- Supporting accessories**
- Hexagon socket round head screw (strength grade 8.8) M6x16, S=5, K=6, galvanized.
 - Hexagon nut (strength grade 8.8) M6, M=7, S=10, galvanized.



SQarallel Connection



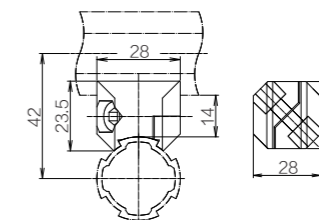
● The parallel connection function of two pipes is used for structural expansion and fixation within the suitable range, or for local reinforcement function (can also be installed on the outer wall buckle of 43mm pipes).

specifications

model	SQ-B03
material	aluminum alloy ADC-12
product unit weight	50g/set
packaging quantity	318 set
packaging weight	16.5kg
packaging size	300*220*150(mm)

- Supporting accessories**
- Hexagon socket round head screw (strength grade 8.8) M6x16, S=5, K=6, galvanized.
 - Hexagon nut (strength grade 8.8) M6, M=7, S=10, galvanized.

90 ° cross joint



● Suitable for the cross connection of two aluminum pipes (can also be installed on the outer wall buckle of a 43mm pipe).

specifications

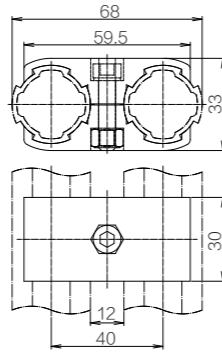
model	SQ-B04
material	aluminum alloy ADC-12
product unit weight	36g/set
packaging quantity	360 set
packaging weight	13.4kg
packaging size	300*220*150(mm)

- Supporting accessories**
- Hexagon socket round head screw (strength grade 8.8) M6x16, S=5, K=6, galvanized.
 - Hexagon nut (strength grade 8.8) M6, M=7, S=10, galvanized.



28mm Connection series

SQarallel Fixed Joint

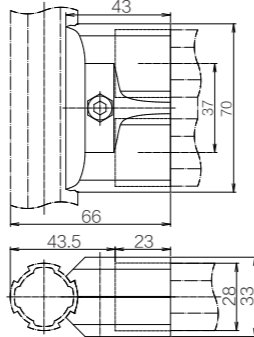
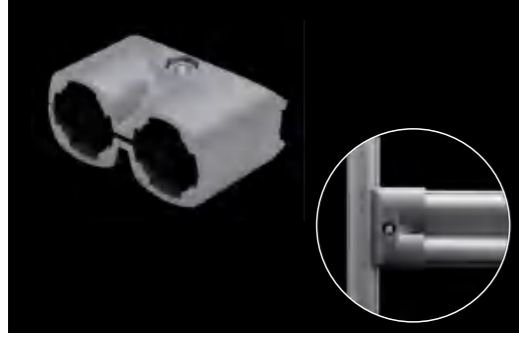


specifications	
model	SQ-B05
material	aluminum alloy ADC-12
product unit weight	73g/set
packaging quantity	128 set
packaging weight	9.6kg
packaging size	300*220*150(mm)

- Supporting accessories**
- Hexagon socket round head screw (strength grade 8.8) M6x25, S=5, K=6, galvanized.
 - Hexagon nut (strength grade 8.8) M6, M=7, S=10, galvanized.

Used for parallel connection of aluminum pipes with external supports, and can also be used for other structural expansion functions.

Double Tube Outer Straight Head

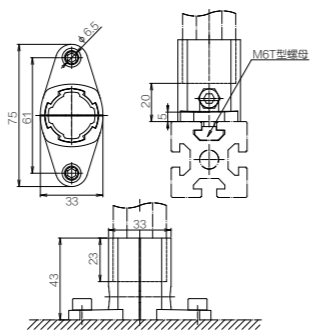
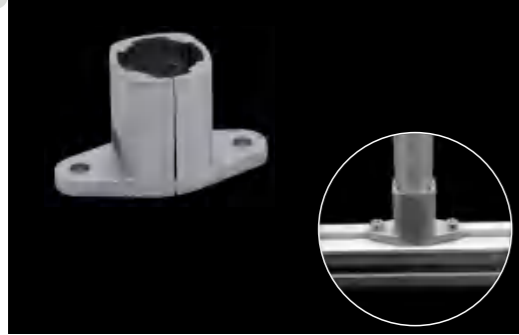


specifications	
model	SQ-B06
material	aluminum alloy ADC-12
product unit weight	114g/set
packaging quantity	80 set
packaging weight	9.4kg
packaging size	300*220*150(mm)

- Supporting accessories**
- Hexagon socket round head screw (strength grade 8.8) M6x25, S=5, K=6, galvanized.
 - Hexagon nut (strength grade 8.8) M6, M=7, S=10, galvanized.

Used for connecting double aluminum pipes (can also be installed on the outer wall buckle of 43mm pipes).

External Holding Foot

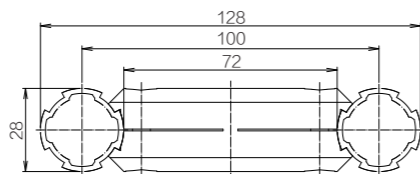


specifications	
model	SQ-B07
material	aluminum alloy ADC-12
product unit weight	79g/set
packaging quantity	140 set
packaging weight	10.8kg
packaging size	300*220*170(mm)

- Supporting accessories**
- Hexagon socket round head screw (strength grade 8.8) M6x25, S=5, K=6, galvanized.
 - Hexagon nut (strength grade 8.8) M6, M=7, S=10, galvanized.

Suitable for interconnecting with other industrial aluminum profiles, as well as connecting floors and walls.

SQarallel Extension Joint

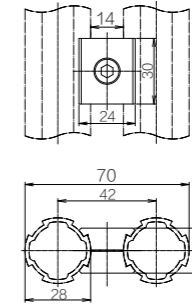
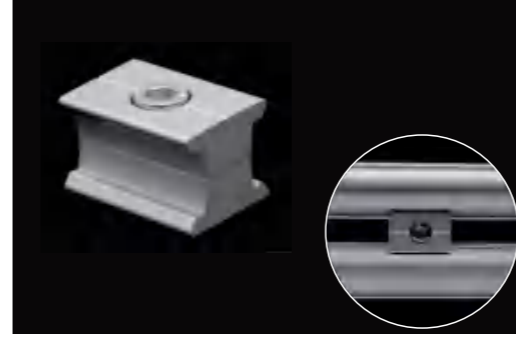


specifications	
model	SQ-B08
material	aluminum alloy ADC-12
product unit weight	95g/set
packaging quantity	130 set
packaging weight	12.5kg
packaging size	300*220*170(mm)

- Supporting accessories**
- Hexagon socket round head screw (strength grade 8.8) M6x25, S=5, K=6, galvanized.
 - Hexagon nut (strength grade 8.8) M6, M=7, S=10, galvanized.

Suitable for the expansion and local reinforcement of the main structure (also can be installed on the outer wall buckle of 43mm pipes).

SQarallel Joint A

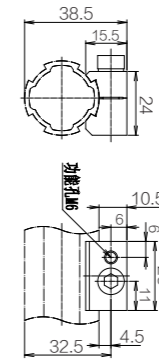
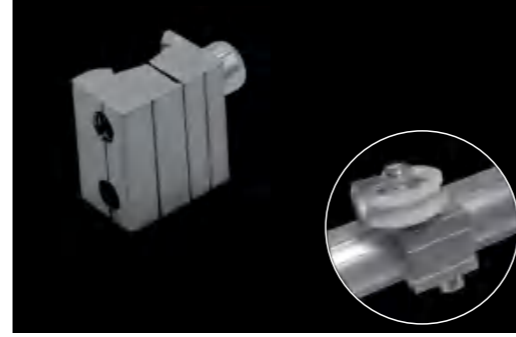


specifications	
model	SQ-B09
material	aluminum alloy ADC-12
product unit weight	28g/set
packaging quantity	630 set
packaging weight	16.6kg
packaging size	300*220*170(mm)

- Supporting accessories**
- Hexagon socket round head screw (strength grade 8.8) M6x25, S=5, K=6, galvanized.
 - Hexagon nut (strength grade 8.8) M6, M=7, S=10, galvanized.

The function is the same as that of a parallel joint, and can be used in conjunction with a 90° cross joint (it can also be installed on the outer wall buckle of a 43mm pipe).

Function Accessory A

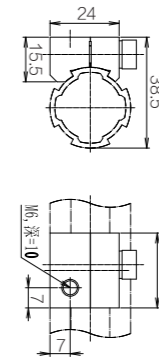
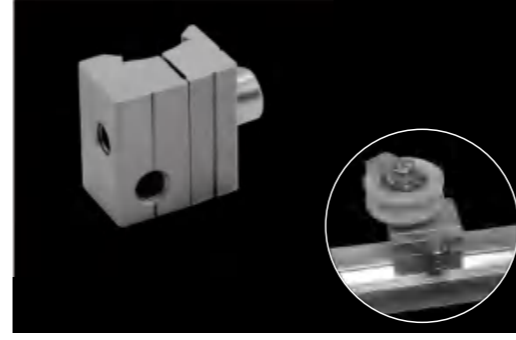


specifications	
model	SQ-B10
material	aluminum alloy ADC-12
product unit weight	23g/set
packaging quantity	500 set
packaging weight	11.9kg
packaging size	300*220*150(mm)

- Supporting accessories**
- Hexagon socket round head screw (strength grade 8.8) M6x25, S=5, K=6, galvanized.
 - Hexagon nut (strength grade 8.8) M6, M=7, S=10, galvanized.

The main structure requires the installation of pulleys and other threaded (M6) accessories (which can also be installed on the outer wall buckle of 43mm pipes).

Function Accessory B

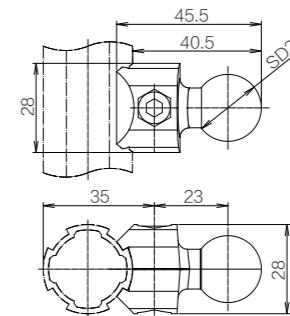


specifications	
model	SQ-B11
material	aluminum alloy ADC-12
product unit weight	24g/set
packaging quantity	500 set
packaging weight	12.5kg
packaging size	300*220*150(mm)

- Supporting accessories**
- Hexagon socket round head screw (strength grade 8.8) M6x25, S=5, K=6, galvanized.
 - Hexagon nut (strength grade 8.8) M6, M=7, S=10, galvanized.

The main structure requires the installation of pulleys and other threaded (M6) accessories (which can also be installed on the outer wall buckle of 43mm pipes).

Round Head Hook

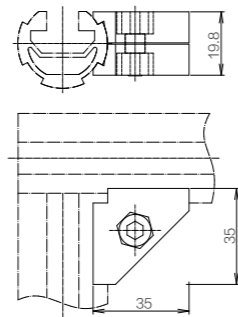
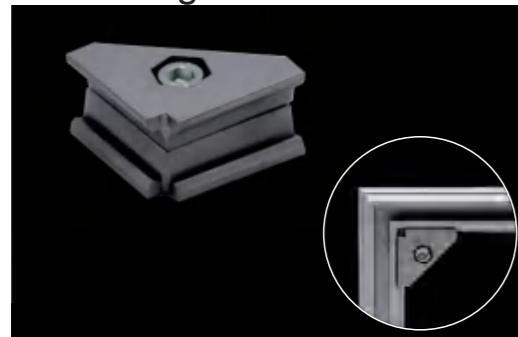


specifications	
model	SQ-B12
material	aluminum alloy ADC-12
product unit weight	42g/set
packaging quantity	250 set
packaging weight	10.8kg
packaging size	300*220*150(mm)

- Supporting accessories**
- Hexagon socket round head screw (strength grade 8.8) M6x20, S=5, K=6, galvanized.
 - Hexagon nut (strength grade 8.8) M6, M=7, S=10, galvanized.

Install a convenient and fast hook that can hang tools with ropes and rings (or can be installed on the outer wall buckle of 43mm pipes).

90 ° Angle Fixed Joint



specifications

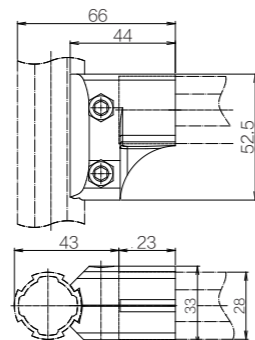
model	SQ-B13
material	aluminum alloy ADC-12
product unitweight	30g/set
packaging quantity	462 set
packaging weight	15kg
packaging size	300*220*170(mm)

Supporting accessories

- Hexagon socket round head screw (strength grade 8.8) M6x20, S=5, K=6, galvanized.
- Hexagon nut (strength grade 8.8) M6, M=7, S=10, galvanized.

• Used for connecting the side of T-shaped aluminum pipes at a 90 ° angle, or when internal and external joints cannot be used, they can be connected between the protruding buckles of the aluminum pipes (or installed on the outer wall buckle of the 43mm pipe).

Reinforced External Direct Head



specifications

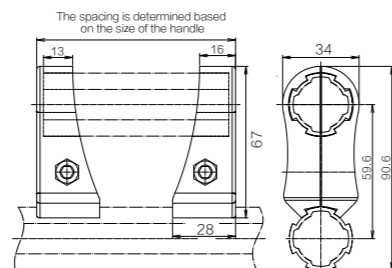
model	SQ-B14
material	aluminum alloy ADC-12
product unitweight	84g/set
packaging quantity	108 set
packaging weight	10.4kg
packaging size	300*220*150mm

Supporting accessories

- Hexagon socket round head screws (strength grade 8.8) M6x20 * 2pcs, s=5, k=8 galvanized
- Hexagon nut (strength grade 8.8) M6 * 2pcs, m=7, s=10, galvanized.

• Compared with the external direct connector, it improves the sliding load of the connector (which can also be installed on the outer wall buckle of the 43mm pipe).

Armrest Joint



specifications

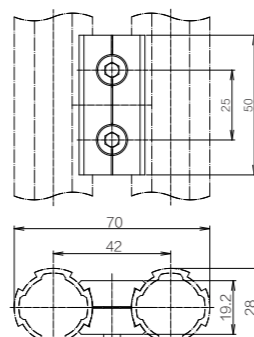
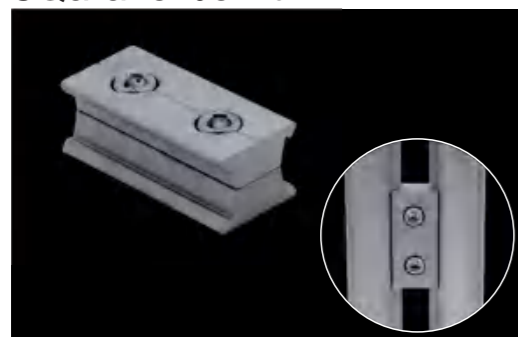
model	SQ-B15
material	aluminum alloy ADC-12
product unitweight	68g/set
packaging quantity	144 set
packaging weight	10.1kg
packaging size	300*220*150mm

Supporting accessories

- Hexagon socket round head screws (strength grade 8.8) M6x20 * 1pcs, s=5, k=8 galvanized.
- Hexagon nut (strength grade 8.8) M6 * 1pcs, m=7, s=10, galvanized.

• Special connectors for designing handrails (can also be installed on the outer wall buckle of 43mm pipes).

SQarallel Joint B



specifications

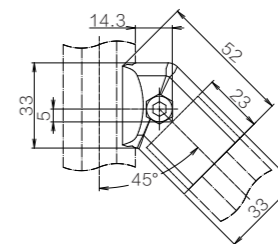
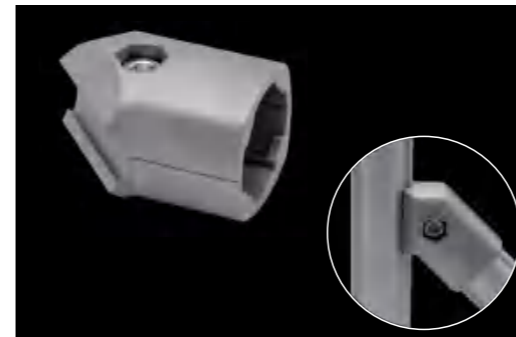
model	SQ-B16
material	aluminum alloy ADC-12
product unitweight	47g/set
packaging quantity	336 set
packaging weight	16.3kg
packaging size	300*220*150(mm)

Supporting accessories

- Hexagon socket round head screws (strength grade 8.8) M6x20 * 2pcs, s=5, k=6 galvanized.
- Hexagon nut (strength grade 8.8) M6 * 2pcs, m=7, s=10, galvanized.

• The function is the same as parallel joint A, which increases in length and enhances rigidity (it can also be installed on the outer wall buckle of 43mm pipes).

45 ° External Bend Joint



specifications

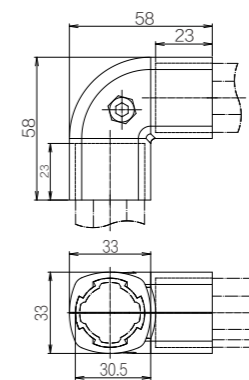
model	SQ-B18
material	aluminum alloy ADC-12
product unitweight	61g/set
packaging quantity	152 set
packaging weight	9.6kg
packaging size	300*220*150(mm)

Supporting accessories

- Hexagon socket round head screw (strength grade 8.8) M6x20, S=5, K=8, galvanized.
- Hexagon nut (strength grade 8.8) M6, M=7, S=10, galvanized.

• Used for 45 ° reinforced connections at right angles or elevations to enhance frame rigidity (can also be installed on the outer wall buckle of 43mm pipes).

90 ° External Bend Joint



specifications

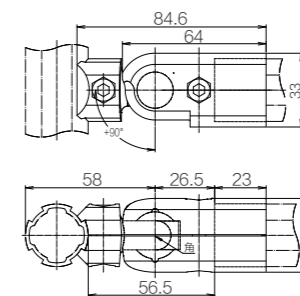
model	SQ-B19
material	aluminum alloy ADC-12
product unitweight	94g/set
packaging quantity	80 set
packaging weight	8kg
packaging size	300*220*150(mm)

Supporting accessories

- Hexagon socket round head screw (strength grade 8.8) M6x20, S=5, K=8, galvanized.
- Hexagon nut (strength grade 8.8) M6, M=7, S=10, galvanized.

• Used for 90 ° external connection of two aluminum pipes.

90 ° Movable Outer Joint



specifications

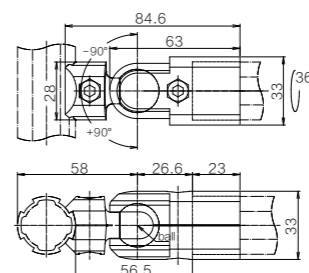
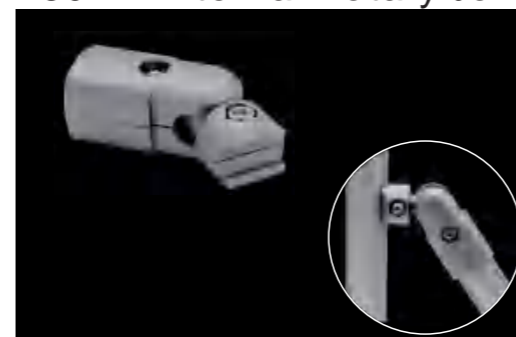
model	SQ-B20
material	aluminum alloy ADC-12
product unitweight	130g/set
packaging quantity	88 set
packaging weight	11.8kg
packaging size	300*220*150(mm)

Supporting accessories

- Hexagon socket round head screw (strength grade 8.8) M6x20, S=5, K=8, galvanized.
- Hexagon nut (strength grade 8.8) M6, M=7, S=10, galvanized.

• After installation and tightening, it can rotate and move in a fan-shaped manner within a 90 ° range (or be installed on the outer wall buckle of a 43mm pipe). Please add solid lubricating grease when using it.

180 ° External Rotary Joint



specifications

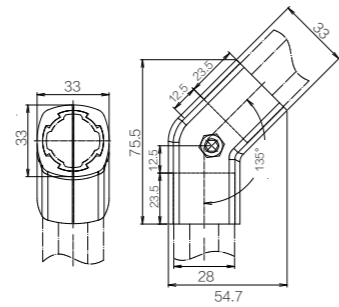
model	SQ-B21
material	aluminum alloy ADC-12
product unitweight	115g/set
packaging quantity	88 set
packaging weight	10.6kg
packaging size	300*220*150(mm)

Supporting accessories

- Hexagon socket round head screw (strength grade 8.8) M6x20, S=5, K=8, galvanized.
- Hexagon nut (strength grade 8.8) M6, M=7, S=10, galvanized.

• Capable of strengthening connections within a variable angle of 180 °, or structural design at any angle (can also be installed on the outer wall buckle of 43mm pipes).

135 ° Outer Joint



specifications

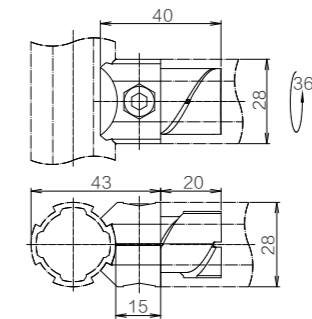
model	SQ-B22
material	aluminum alloy ADC-12
product unitweight	92g/set
packaging quantity	80 set
packaging weight	12.5kg
packaging size	300*220*150mm

Supporting accessories

- Hexagon socket round head screws (strength grade 8.8) M6x20 * 1pcs, s=5, k=8 galvanized.
- Hexagon nut (strength grade 8.8) M6 * 1pcs, m=7, s=10, galvanized.

- Can complete a 135 ° fixed angle connector.

Internal Rotary Joint



specifications

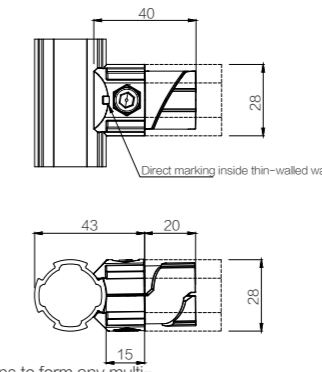
model	SQ-B26
material	aluminum alloy ADC-12
product unitweight	46g/set
packaging quantity	270 set
packaging weight	12.9kg
packaging size	300*220*150(mm)

Supporting accessories

- Hexagon socket round head screw (strength grade 8.8) M6x20, S=5, K=8, galvanized.
- Hexagon nut (strength grade 8.8) M6, M=7, S=10, galvanized.

- The built-in installation direction of the aluminum tube can rotate at any angle to meet the required angle for the horizontal aluminum tube (it can also be installed on the outer wall buckle of the 43mm pipe).

Straight Joint In Thin Tube



specifications

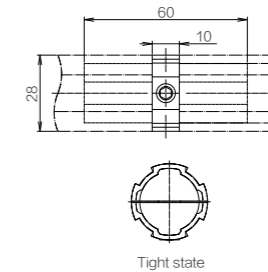
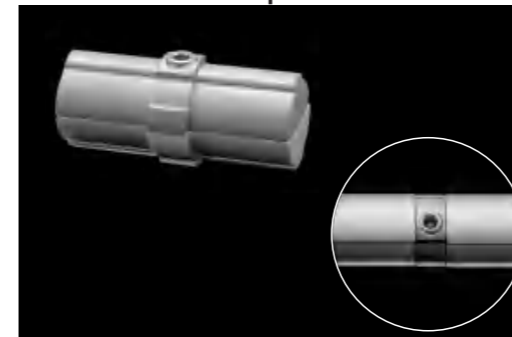
model	SQ-B27
material	铝合金ADC12
product unitweight	47g/set
packaging quantity	270 set
packaging weight	13.1kg
packaging size	300*220*150(mm)

Supporting accessories

- Hexagon socket round head screw (strength grade 8.8) M6x20, S=5, K=8, galvanized.
- Hexagon nut (strength grade 8.8) M6, M=7, S=10, galvanized.

- The semi hidden structure can be connected to aluminum pipes in four directions to form any multi-dimensional structure (it can also be installed on the outer wall buckle of 43mm pipes); The embedded end can only be used for thin-walled basic aluminum pipes, with teeth on the side.

Aluminum Pipe Connection Joint



specifications

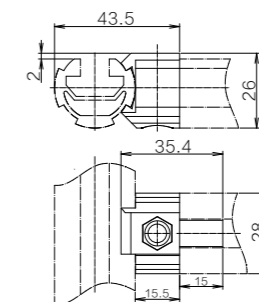
model	SQ-B28
material	aluminum alloy ADC-12
product unitweight	47g/set
packaging quantity	185 set
packaging weight	8.8kg
packaging size	300*220*150(mm)

Supporting accessories

- Hexagon socket flat end screw (full thread strength grade 8.8) M8x20, S=4, galvanized.

- Used for extended connection of two aluminum tube end faces.

T-tube Joint



specifications

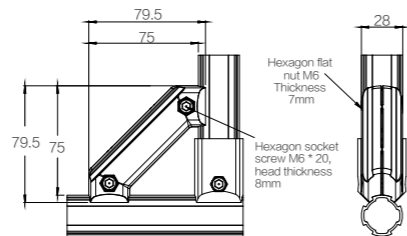
model	SQ-B29
material	aluminum alloy ADC-12
product unitweight	36g/set
packaging quantity	432 set
packaging weight	15.8kg
packaging size	300*220*150mm

Supporting accessories

- Hexagon socket round head screws (strength grade 8.8) M6x20 * 1pcs, s=5, k=6 galvanized.
- Hexagon nut (strength grade 8.8) M6 * 1pcs, M=7, S=10, galvanized treatment.

- For the special connection of T-shaped groove aluminum pipes, there is a buckle on the side that is the same as the aluminum (or can be installed on the outer wall buckle of the 43mm pipe) pipe, and a 90 ° right angle fixed joint can be installed for reinforcement! This product is not suitable for directly installing flat casters at the bottom of the material track. *此产品不适用物料车底部直接安装平板脚轮

45 ° Reinforced Joint



specifications

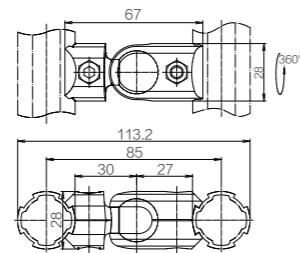
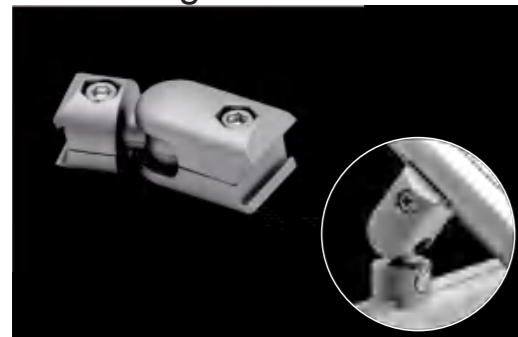
model	SQ-B23
material	aluminum alloy ADC-12
product unitweight	106g/set
packaging quantity	90 set
packaging weight	11.5kg
packaging size	300*220*170(mm)

Supporting accessories

- Hexagon socket round head screw (strength grade 8.8) M6x20, S=5, K=8, galvanized.
- Hexagon nut (strength grade 8.8) M6, M=7, S=10, galvanized.

- Used for local reinforcement at right angle connections, with teeth on the outer side (can also be installed on the 43mm pipe outer wall buckle).

Multi Angle Fixed Joint



specifications

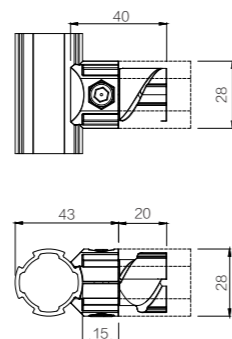
model	SQ-B24
material	aluminum alloy ADC12
product unitweight	90g/set
packaging quantity	165 set
packaging weight	15.1kg
packaging size	300*220*150mm

Supporting accessories

- Hexagon socket round head screws (strength grade 8.8) M6x20 * 2pcs, s=5, k=6 galvanized.
- Hexagon nut (strength grade 8.8) M6 * 2pcs, m=7, s=10, galvanized.

- The aluminum pipe protrusions can be clamped on both sides of the connecting piece, and the installation angle of the aluminum pipe can be determined arbitrarily. The angle can be fixed by tightening the screws (or installed on the outer wall buckle of the 43mm pipe).

Internal Straight Head



specifications

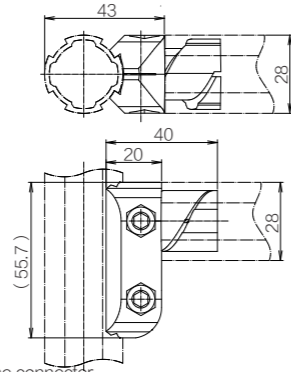
model	SQ-B25
material	aluminum alloy ADC12
product unitweight	46g/set
packaging quantity	270 set
packaging weight	13.2kg
packaging size	300*220*150mm

Supporting accessories

- Hexagon socket round head screw (strength grade 8.8) M6x20, S=5, K=8, galvanized.
- Hexagon nut (strength grade 8.8) M6, M=7, S=10, galvanized.

- The semi hidden structure can be connected to aluminum pipes in four directions to form any multi-dimensional structure, with teeth on the side (it can also be installed on the outer wall buckle of 43mm pipes).

Reinforced Inner Straight Head



specifications

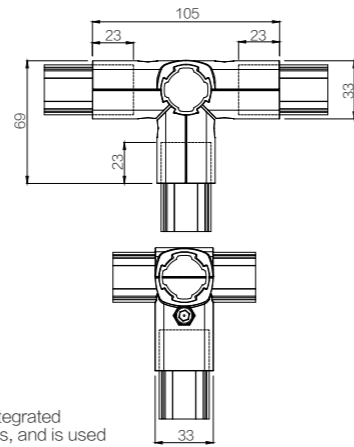
model	SQ-B30
material	aluminum alloy ADC-12
product unitweight	75g/set
packaging quantity	180 set
packaging weight	14kg
packaging size	300*220*150mm

Supporting accessories

- Hexagon socket round head screws (strength grade 8.8) M6x20 * 2pcs, s=5, k=6 galvanized.
- Hexagon nut (strength grade 8.8) M6 * 2pcs, m=7, s=i0, galvanized.

Compared with the internal direct connector, it improves the sliding load of the connector (which can also be installed on the outer wall buckle of the 43mm pipe).

External T-joint



specifications

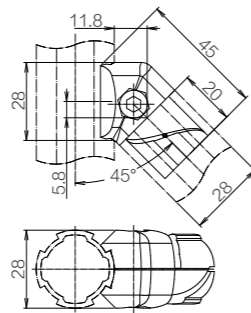
model	SQ-B31
material	aluminum alloy ADC-12
product unitweight	187g/set
packaging quantity	/
packaging weight	/
packaging size	300*220*150mm

Supporting accessories

- Hexagon socket round head screws (strength grade 8.8) M6x20 * 3pcs, s=5, k=8 galvanized.
- Hexagon nut (strength grade 8.8) M6 * 3pcs, m=7, s=i0, galvanized.

Used for T-shaped structure external connection, which improves the integrated connection strength between horizontal sides and vertical aluminum pipes, and is used for connecting structures with high stress.

45 ° Internal Bend Joint



specifications

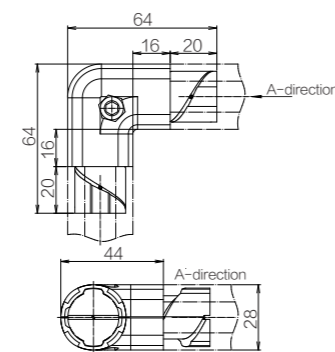
model	SQ-B32
material	aluminum alloy ADC-12
product unitweight	46g/set
packaging quantity	245 set
packaging weight	12kg
packaging size	300*220*150(mm)

Supporting accessories

- Hexagon socket round head screw (strength grade 8.8) M6x20, S=5, K=8, galvanized.
- Hexagon nut (strength grade 8.8) M6, M=7, S=i0, galvanized.

Used for strengthening the connection of a 45 ° frame to enhance its rigidity (it can also be installed on the outer wall buckle of a 43mm pipe).

90 ° Internal Connector



specifications

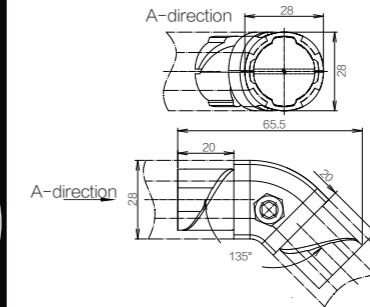
model	SQ-B33
material	aluminum alloy ADC-12
product unitweight	98g/set
packaging quantity	100 set
packaging weight	10kg
packaging size	300*220*150(mm)

Supporting accessories

- Hexagon socket round head screws (strength grade 8.8) M6x20 * 1pcs, s=5, k=6 galvanized.
- Hexagon nut (strength grade 8.8) M6 * 1pcs, m=7, s=i0, galvanized.

For the 90 ° internal connection of two aluminum pipes, the shape is improved based on the 90 ° internal bending joint, and only one screw is needed to fix it.

135 ° Internal Connector



specifications

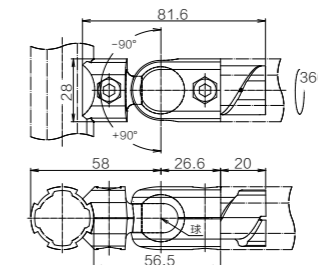
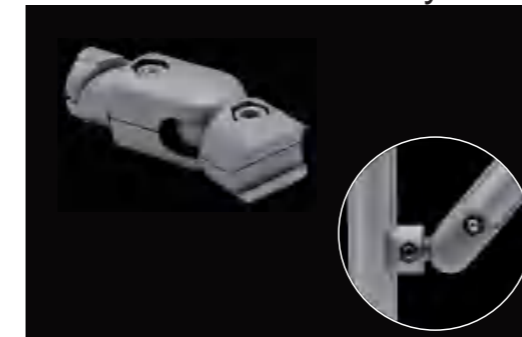
model	SQ-B34
material	aluminum alloy ADC-12
product unitweight	73g/set
packaging quantity	150 set
packaging weight	11.4kg
packaging size	300*220*150mm

Supporting accessories

- Hexagon socket round head screws (strength grade 8.8) M6x20 * 1pcs, s=5, k=6 galvanized.
- Hexagon nut (strength grade 8.8) M6 * 1pcs, M=7, s=i0, galvanized treatment.

Two aluminum pipe ports are connected to form a fixed 135 ° angle connector.

180 ° Internal Rotary Joint



specifications

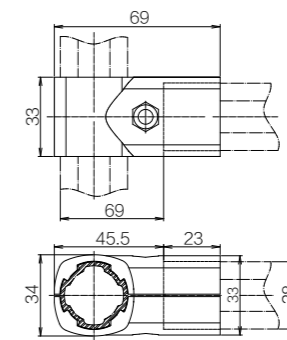
model	SQ-B35
material	aluminum alloy ADC-12
product unitweight	106g/set
packaging quantity	130 set
packaging weight	14.2kg
packaging size	300*220*150(mm)

Supporting accessories

- Hexagon socket round head screw (strength grade 8.8) M6x20, S=5, K=6, galvanized.
- Hexagon nut (strength grade 8.8) M6, M=7, S=i0, galvanized.

Capable of strengthening connections within a variable angle of 180 ° , or structural design at any angle (can also be installed on the outer wall buckle of 43mm pipes).

Direct Head Holding



specifications

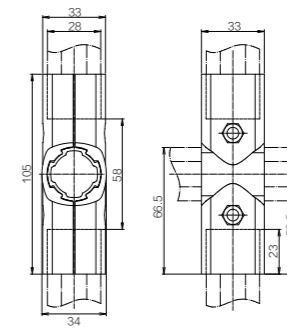
model	SQ-B36
material	aluminum alloy ADC-12
product unitweight	86g/set
packaging quantity	96 set
packaging weight	8.6kg
packaging size	300*220*150(mm)

Supporting accessories

- Hexagon socket round head screw (strength grade 8.8) M6x20, S=5, K=8, galvanized.
- Hexagon nut (strength grade 8.8) M6, M=7, S=i0, galvanized.

The reinforced type of external direct head improves the strength of the connection with vertical aluminum pipes, and is used for connecting structures with high stress.

External Holding Cross Joint



specifications

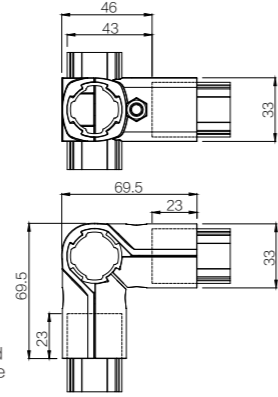
model	SQ-B37
material	aluminum alloy ADC-12
product unitweight	140g/set
packaging quantity	64 set
packaging weight	9.2kg
packaging size	300*220*150(mm)

Supporting accessories

- Hexagon socket round head screw (strength grade 8.8) M6x20, S=5, K=8, galvanized.
- Hexagon nut (strength grade 8.8) M6, M=7, S=i0, galvanized.

Used for cross structure connection, improving the integrated connection strength between horizontal sides and vertical aluminum pipes, and for connecting structures with high stress.

External Holding 90 ° joint

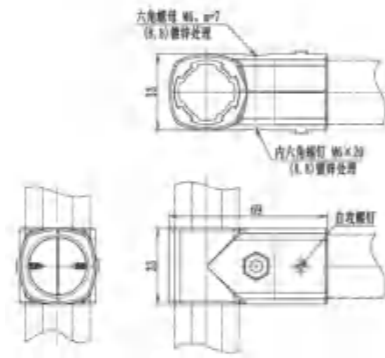


specifications	
model	SQ-B38
material	aluminum alloy ADC-12
product unit weight	138g/set
packaging quantity	64 set
packaging weight	8.9kg
packaging size	300*220*150(mm)

- Supporting accessories**
- Hexagon socket round head screws (strength grade 8.8) M6x20 * 2pcs, s=5, k=8 galvanized.
 - Hexagon nut (strength grade 8.8) M6 * 2pcs, m=7, s=10, galvanized.

● The integrated joint with a vertical and 90 ° angle enhances the rigidity and load capacity of the overall frame, especially when used at the bottom of the material truck, which enhances the rigidity by about 1.5 times.

External Holding Common Direct Head A

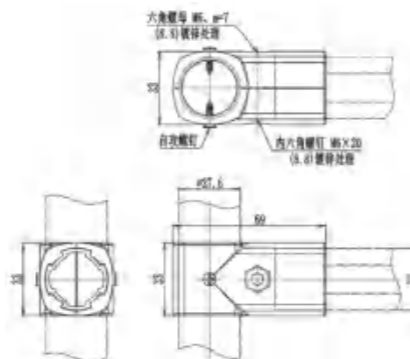


specifications	
model	SQ-B40
material	aluminum alloy ADC-12
product unit weight	82g/set
packaging quantity	96 set
packaging weight	8.2kg
packaging size	300*220*150mm

- Supporting accessories**
- Hexagon socket round head screws (strength grade 8.8) M6x20 * 1pcs, s=5, k=8 galvanized.
 - Hexagon nut (strength grade 8.8) M6 * 1pcs, m=7, s=10, galvanized.

● The vertical third generation tube can be compatible with the first and second generation tubes in the horizontal direction, and screw holes are reserved at the outer part of the first and second generation tubes for reinforcement.

External Holding Common Direct Head B

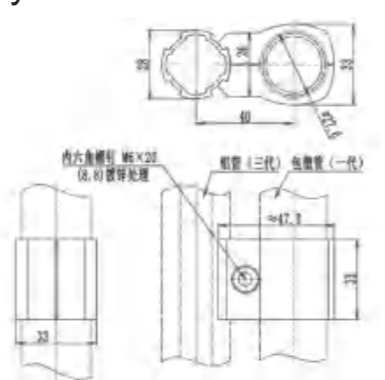


specifications	
model	SQ-B41
material	aluminum alloy ADC-12
product unit weight	82g/set
packaging quantity	96 set
packaging weight	8.2kg
packaging size	300*220*150(mm)

- Supporting accessories**
- Hexagon socket round head screws (strength grade 8.8) M6x20 * 1pcs, s=5, k=8 galvanized.
 - Hexagon nut (strength grade 8.8) M6 * 1pcs, m=7, s=10, galvanized treatment.

● The horizontal third generation tube can be compatible with the first and second generation tubes in the vertical direction, and screw holes are reserved at the outer part of the first and second generation tubes for reinforcement.

External Holding Common Bayonet Joint

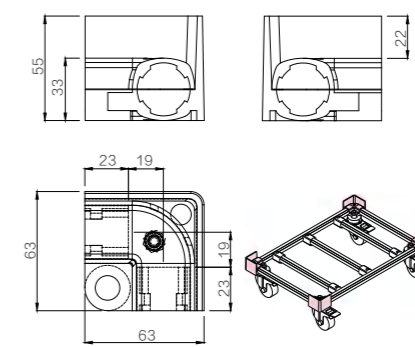


specifications	
model	SQ-B42
material	aluminum alloy ADC-12
product unit weight	60g/set
packaging quantity	144 set
packaging weight	9kg
packaging size	300*220*150(mm)

- Supporting accessories**
- Hexagon socket round head screws (strength grade 8.8) M6x20 * 1pcs, s=5, k=6 galvanized.
 - Hexagon nut (strength grade 8.8) M6 * 1pcs, m=7, s=10, galvanized.

● The vertical third generation tube can be compatible with the first and second generation tubes in the vertical direction.

Tortoise Car Connector

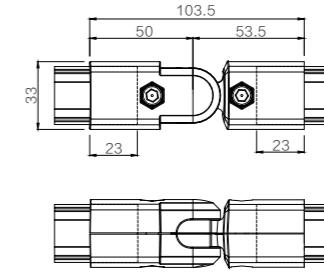


specifications	
model	SQ-B62
material	aluminum alloy ADC-12
product unit weight	177g/set
packaging quantity	48 set
packaging weight	9kg
packaging size	300*220*150(mm)

- Supporting accessories**
- Hexagon socket round head screw (strength grade 8.8) M6x20, S=5, K=8, galvanized.
 - Hexagon nut (strength grade 8.8) M6, M=7, S=10, galvanized.

● Commonly used for installing pallet devices such as turtle carts.

180 ° External Rotary Joint At Both Ends

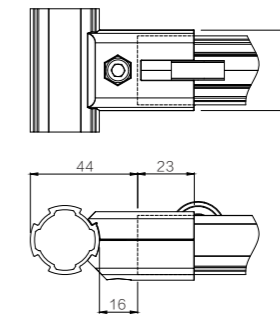
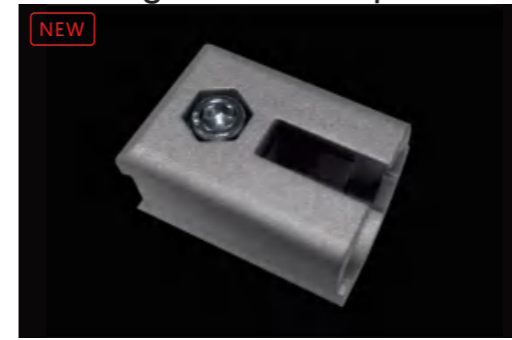


specifications	
model	SQ-B63
material	aluminum alloy ADC-12
product unit weight	145g/set
packaging quantity	72 set
packaging weight	10.7kg
packaging size	300*220*150(mm)

- Supporting accessories**
- Hexagon socket round head screw (strength grade 8.8) M6x20 x2pcs, S=5, K=8, galvanized.
 - Hexagon nut (strength grade 8.8) M6x2pcs, M=7, S=10, galvanized.

● Capable of strengthening connections within a variable angle of 180 ° , or structural design at any angle, with both ends wrapped externally.

Bearing Fluent Strip Joint

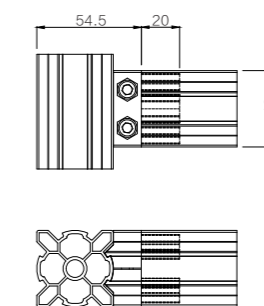


specifications	
model	SQ-B64
material	aluminum alloy ADC-12
product unit weight	51g/set
packaging quantity	225 set
packaging weight	11kg
packaging size	300*220*150(mm)

- Supporting accessories**
- Hexagon socket round head screws (strength grade 8.8) M6x20 * 2pcs, s=5, k=6 galvanized.
 - Hexagon nut (strength grade 8.8) M6 * 2pcs, m=7, s=10, galvanized treatment.

● Used for connecting the bearing fluency strip and the third generation tube.

Lean Profile Inner Direct Head

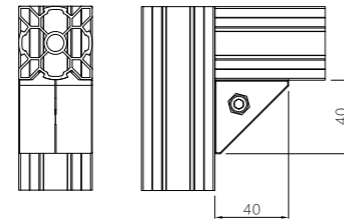
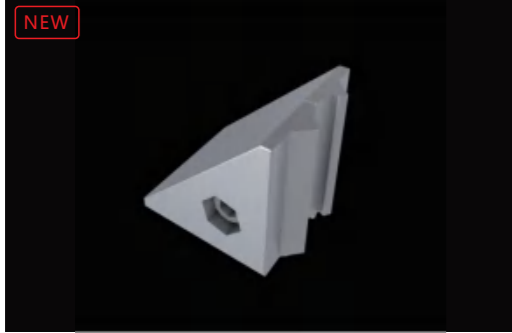


specifications	
model	SQ-B65
material	aluminum alloy ADC-12
product unit weight	/
packaging quantity	/
packaging weight	/
packaging size	/

- Supporting accessories**
- Hexagon socket round head screws (strength grade 8.8) M6x20 * 2pcs, s=5, k=8 galvanized.
 - Hexagon nut (strength grade 8.8) M6 * 2pcs, m=7, s=10, galvanized.

● Used for built-in connections between lean aluminum profiles.

Lean Profile 90 ° Right Angle Joint



specifications

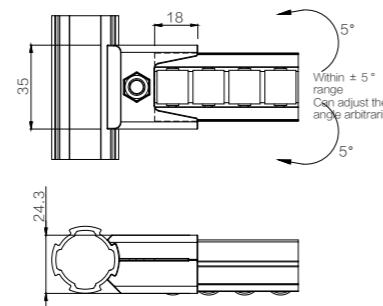
model	SQ-B66
material	aluminum alloy ADC-12
product unitweight	/
packaging quantity	/
packaging weight	/
packaging size	/

Supporting accessories

- Hexagon socket round head screws (strength grade 8.8) M6x20 * 1pcs, s=5, k=8 galvanized
- Hexagon nut (strength grade 8.8) M6 * 1pcs, m=7, s=10, galvanized.

• Used for external 90 ° connection between lean aluminum profiles.

Pocket Fluency Bar Connector



specifications

model	SQ-B67
material	aluminum alloy ADC-12
product unitweight	/
packaging quantity	/
packaging weight	/
packaging size	/

Supporting accessories

- Hexagon socket round head screw (strength grade 8.8) M6x20, S=5, K=6, galvanized.
- Hexagon nut (strength grade 8.8) M6, M=7, S=10, galvanized.

• Used for the connection between the pocket fluency bar and the third generation tube, and can be adjusted at any angle within a range of $\pm 5^\circ$.

28mm aluminum tube

28mm connector

28mm metal accessories

28mm Non-metallic accessories

43mm product

Fluency bar

Castor foot cup

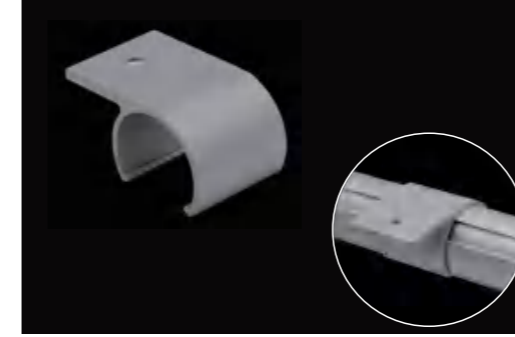
Module components

Application Scenario Case reference

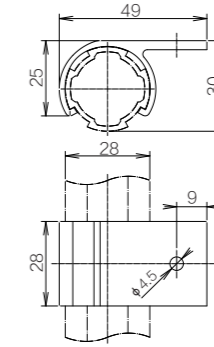
Technical Parameter

Quality regulations matters needing attention

Platen Fixing Buckle



● Used for fixing the table panel to the frame (insert the required clips before the frame is formed).



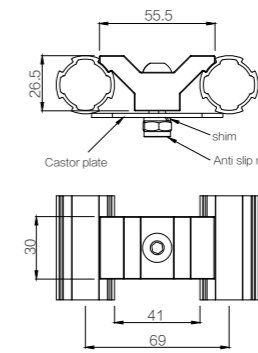
specifications	
model	SQ-D01
material	aluminum alloy 6005T6
product unitweight	14.5g/set
packaging quantity	200 set
packaging weight	3.4kg
packaging size	300*220*150(mm)

- Supporting accessories
- Cross recessed countersunk head tapping screw M4, dk=8.4, M=4.6.

Caster Base Joint



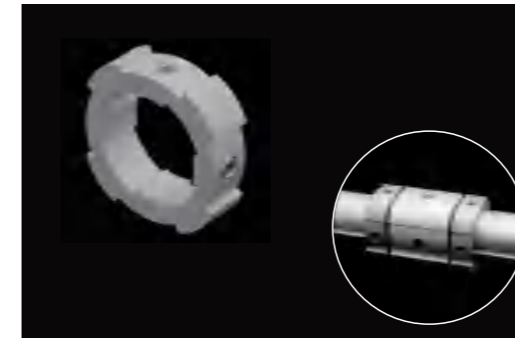
● The connection between the flat casters and the bottom frame.



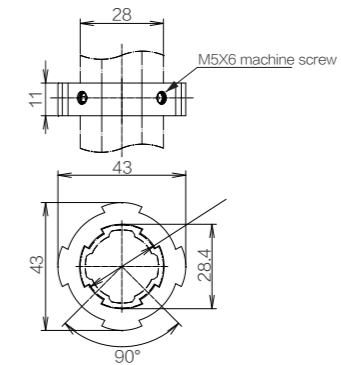
specifications	
model	SQ-D02
material	aluminum alloy ADC-12
product unitweight	/
packaging quantity	/
packaging weight	/
packaging size	300*220*170mm

- Supporting accessories
- Round head hexagonal socket screws (strength grade 8.8) M10 * 1pcs, S=8, K=6 galvanized.
 - Hexagon non slip nut (strength grade 8.8) M10 * 1pcs, m=10, S=6, galvanized treatment, flat washer M10.

Locating Ring Of Sliding Sleeve



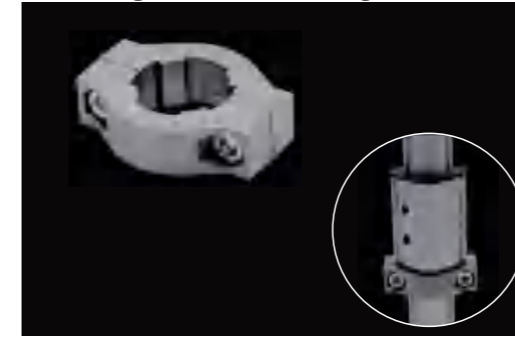
● Used to limit the sliding sleeve on both sides of the aluminum tube in the horizontal direction.



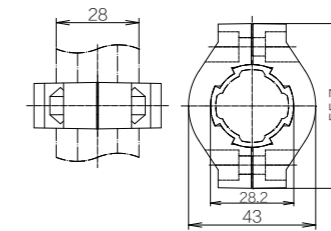
specifications	
model	SQ-D03
material	aluminum alloy 6005T6
product unitweight	18.9g/set
packaging quantity	576 set
packaging weight	11.2kg
packaging size	300*220*150mm

- Supporting accessories
- Hexagon socket flat end screw (full thread strength grade 8.8) M5x6, S=2.5, galvanized treatment.

Strong Positioning Seat

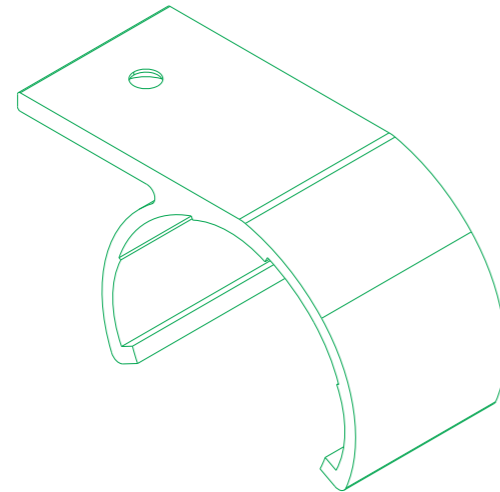


● Used for positioning two types of sliding sleeves, rotators, linear rolling components, and locking rotators in the vertical direction of aluminum pipes.



specifications	
model	SQ-D04
material	aluminum alloy ADC-12
product unitweight	55g/set
packaging quantity	225 set
packaging weight	12.7kg
packaging size	300*220*150(mm)

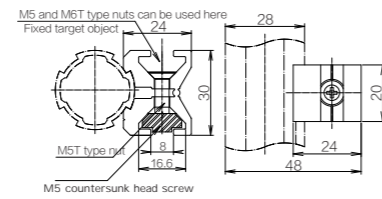
- Supporting accessories
- Hexagon socket round head screw (strength grade 8.8) M6x20, S=5, K=6, galvanized
 - Hexagon nut (strength grade 8.8) M6, M=7, S=10, galvanized.



28mm Metal accessory series

- 28mm aluminum tube
- 28mm connector
- 28mm metal accessories
- 28mm Non-metallic accessories
- 43mm product
- Fluency bar
- Castor foot cup
- Module components
- Application Scenario Case reference
- Technical Parameter
- Quality regulations matters needing attention

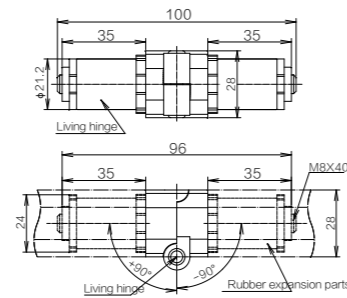
Mosaic Joint



■ specifications	
model	SQ-D05
material	aluminum alloy 6005T6
product unitweight	27.5g/set
packaging quantity	588 set
packaging weight	16.5kg
packaging size	300*220*170mm

- Used to install Kanban and other components on aluminum pipes, supporting external and internal connectors by changing the installation direction (can also be installed on the outer wall buckle of 43mm pipes).

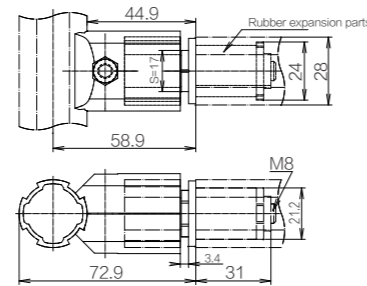
Hinge As-opposite



■ specifications	
model	SQ-D06
material	Aluminum alloy ADC12+rubber+carbon steel
product unitweight	120g/set
packaging quantity	120 set
packaging weight	14.8kg
packaging size	300*220*170(mm)

- The movable table top used for folding structures is also used as a combination component of simple automatic devices.

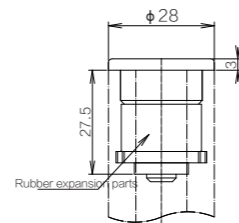
Rotating Assembly



■ specifications	
model	SQ-D07
material	Aluminum alloy 6065T6+rubber+carbon steel+bearings
product unitweight	81g/set
packaging quantity	175 set
packaging weight	14.8kg
packaging size	300*220*150(mm)

- The part that can rotate smoothly after being inserted into the aluminum tube port and tightened.

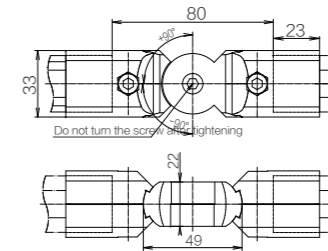
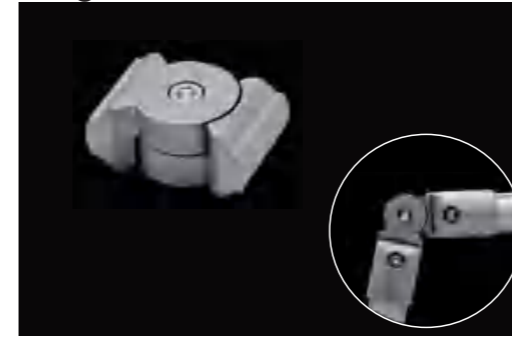
Metal Coping



■ specifications	
model	SQ-D08
material	Aluminum alloy ADC12+rubber+carbon steel
product unitweight	56g/set
packaging quantity	50 set
packaging weight	2.8kg
packaging size	300*220*150(mm)

- Apply to aluminum pipe ports to prevent wear and tear, or for high-end requirements.

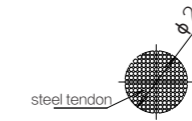
Angle Fixed Connector



■ specifications	
model	SQ-D09
material	aluminum alloy ADC-12
product unitweight	69g/set
packaging quantity	228 set
packaging weight	15.8kg
packaging size	300*220*150(mm)

- Used for product design from any angle, multiple combinations can be designed into specific geometric structures, with the same bidirectional buckle as the protruding part of the aluminum tube

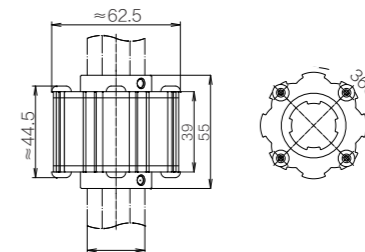
2 Stainless Steel Soft Rope



■ specifications	
model	SQ-D10
material	stainless steel
product unitweight	20g/meter
packaging quantity	50 volume
packaging weight	/
packaging size	/

- Suitable for lifting and traction mechanisms under gravity, with a maximum load of 50kg.

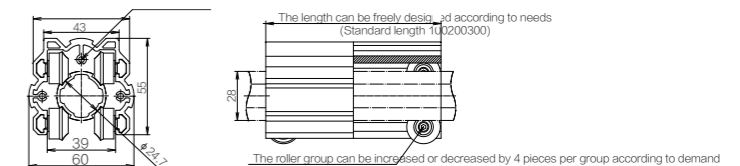
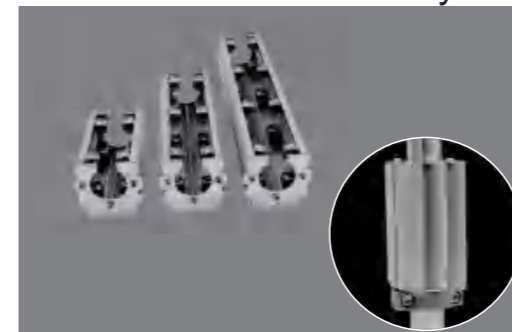
Rotator



■ specifications	
model	SQ-D11
material	Aluminum alloy 6005T6+cold rolled carbon steel+bearings
product unitweight	250g/set
packaging quantity	24 set
packaging weight	6.8kg
packaging size	300*220*150(mm)

- The built-in mechanical bearing can achieve smooth rotation, which can be used as a base and can be designed with a rotating device and a convex buckle connection in 8 directions.

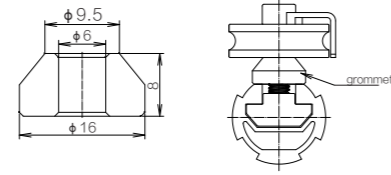
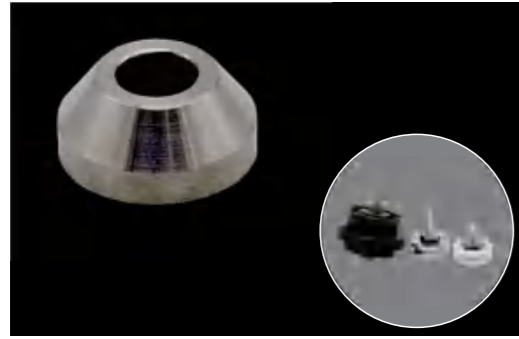
Linear Scroll Assembly



■ specifications		Linear rolling component		
name		100mm	200mm	300mm
length				
model		SQ-D12	SQ-D13	SQ-D14
product unit weight		335g/set	495g/set	645g/set
packaging quantity		16set	8set	6set
packaging weight		5.5kg	4kg	4.5kg
packaging size		300*220*170(mm)	300*220*170(mm)	310*240*170(mm)

- With various aluminum tubes, it can smoothly achieve linear motion. The roller has built-in bearings and protruding buckles on three sides, which is convenient for installation. It is available in three length specifications.

Washer

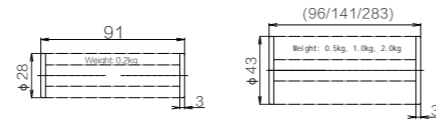
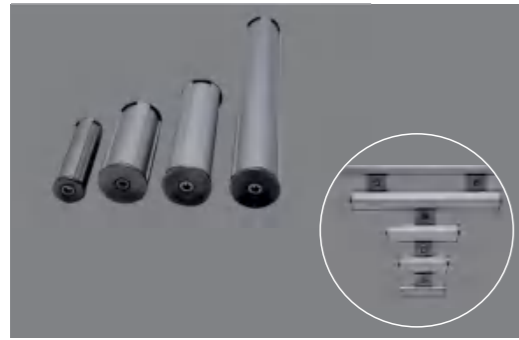


specifications

model	SQ-D15
material	stainless steel
product unitweight	8g/pcs
packaging quantity	/
packaging weight	/
packaging size	/

• Spacer accessories for matching convex guide pulleys, U-groove pulleys, and U-groove metal pulleys.

Weight Bar

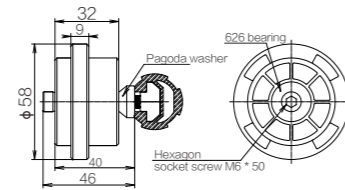
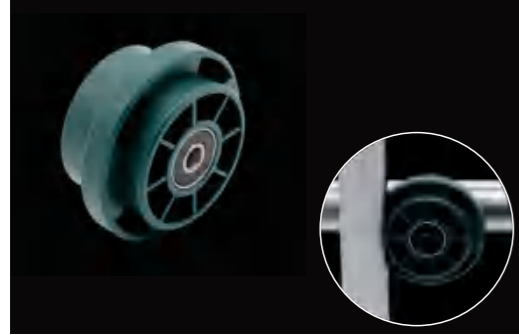


specifications

New model	SQ-D16	SQ-D17	SQ-D18	SQ-D19
length	L=91mm	L=96mm	L=141mm	L=283mm
product unit weight	200g/pcs	500g/pcs	1000g/pcs	2000g/pcs
packaging quantity	/	/	/	/
packaging weight	/	/	/	/
packaging size	300*220*150(mm)	300*220*150(mm)	300*220*150(mm)	300*220*150(mm)
material	Aluminum alloy 6065T6+cold rolled carbon steel CS+rubber			

• Used for gravity structure balance and can be easily connected with parallel fixed joints.

Convex Guide Wheel

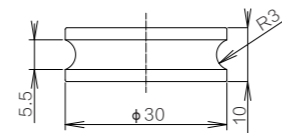


specifications

model	SQ-D20
material	POM+bearing
product unitweight	93g/pcs
packaging quantity	/
packaging weight	/
packaging size	300*220*150(mm)

• A special roller for using T-groove aluminum pipes as tracks, with built-in mechanical bearings, can be used as a lifting and positioning or moving mechanism.

U-groove SQuley

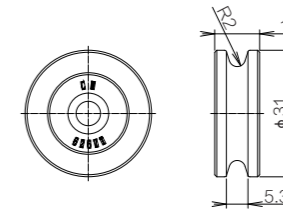


specifications

model	SQ-D21
material	POM+bearing
product unitweight	12.3g/pcs
packaging quantity	/
packaging weight	/
packaging size	300*220*150(mm)

• The wire harness guides the movable accessories, suitable for lighter directional guidance mechanisms.

U-groove Metal Pulley

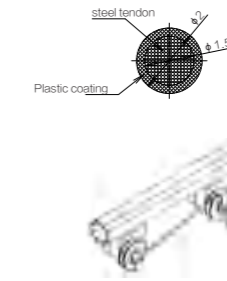
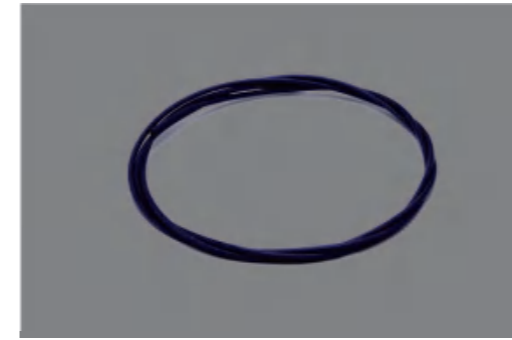


specifications

model	SQ-D22
material	Cold rolled carbon steel+bearings
product unitweight	29.8g/pcs
packaging quantity	/
packaging weight	/
packaging size	300*200*150(mm)

• The wiring harness guides the moving accessories, suitable for guiding the direction of heavier mechanisms.

Stainless Steel Plastic Covered Rope

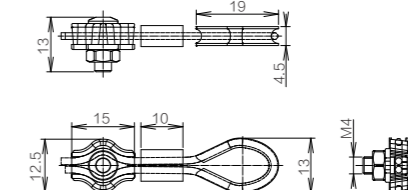


specifications

model	SQ-D23
material	Stainless steel+PVC
product unitweight	17
packaging quantity	50 meters/roll
packaging weight	/
packaging size	/

• The traction of the active or triggered mechanism, with a maximum load of 30kg.

Chuck Kit

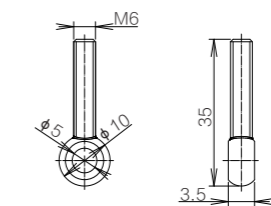


specifications

model	SQ-D24
material	Stainless steel+aluminum alloy
product unitweight	6g/set
packaging quantity	/
packaging weight	/
packaging size	/

• Used for fixing the ends of two types of rope bundles, facilitating connection with other accessories.

Ilive Screw

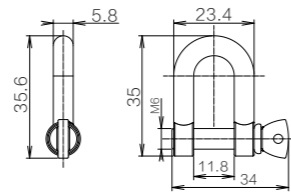
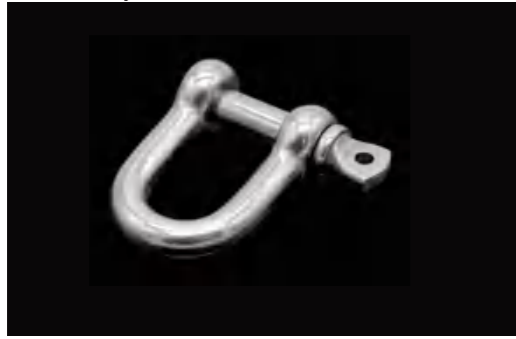


specifications

model	SQ-D25
material	stainless steel
product unitweight	10g/pcs
packaging quantity	/
packaging weight	/
packaging size	/

• Suitable for port fixation of rope bundles or tension springs.

D-shaped buckle

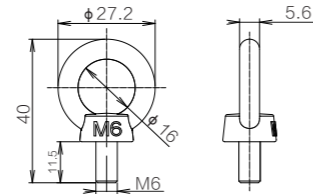
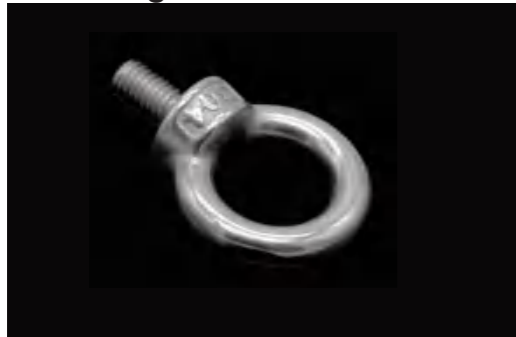


■ specifications

model	SQ-D26
material	stainless steel
product unitweight	23.3g/pcs
packaging quantity	/
packaging weight	/
packaging size	300*220*150(mm)

● Open type connecting accessories.

Hoisting Nut

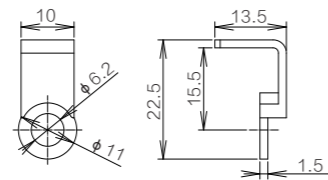


■ specifications

model	SQ-D27
material	stainless steel
product unitweight	19g/pcs
packaging quantity	/
packaging weight	/
packaging size	300*220*150(mm)

● Closed loop nut used to secure the rope bundle.

Rope Positioning SQlat

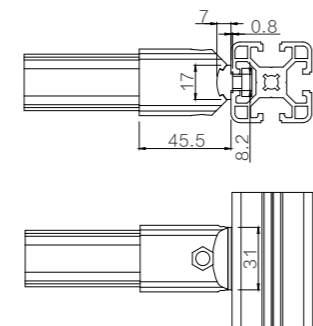
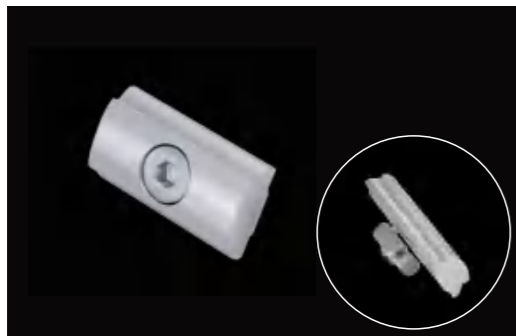


■ specifications

model	SQ-D28
material	Cold rolled carbon steel CS
product unitweight	5.2g/pcs
packaging quantity	/
packaging weight	/
packaging size	300*220*150(mm)

● Suitable for two types of U-groove pulleys to prevent rope bundle detachment.

40 Profile Connector

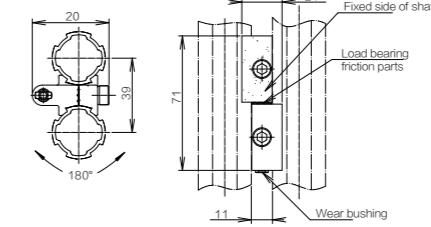
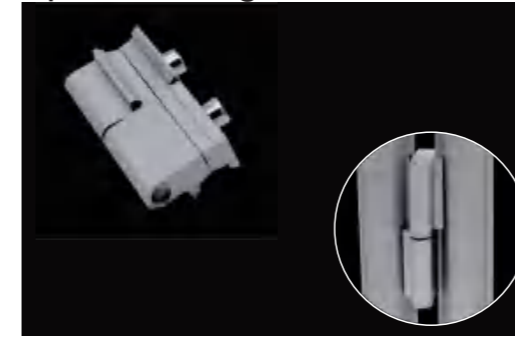


■ specifications

model	SQ-D29
material	Aluminum alloy 6063+carbon steel
product unitweight	28g
packaging quantity	/
packaging weight	/
packaging size	300*220*150(mm)

● Expansion accessories installed with 40 national or European standard aluminum profiles, with protruding buckles on the surface, making it easy to connect with other connectors

Special Hinge

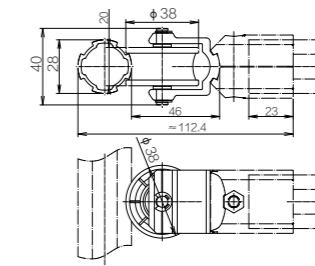


■ specifications

model	SQ-D30
material	Aluminum alloy 6065T6+cold rolled carbon steel CS
product unitweight	168g/pair
packaging quantity	50 set
packaging weight	9kg
packaging size	300*220*150(mm)

● For the hinge of the door leaf, this product has one set for each side. For ease of use, the supporting product is generally suitable for opening on the left or right side. The inner and outer opening methods can be reversed to install the product. In addition, this product can also be used for 43 series aluminum pipes.

Groove Support Roller

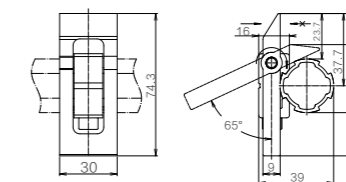
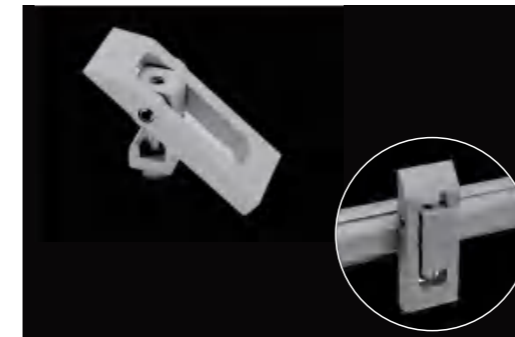


■ specifications

model	SQ-D31
material	Aluminum alloy 6065T6+POM+bearings+stainless steel
product unitweight	67g/set
packaging quantity	100 set
packaging weight	7kg
packaging size	300*220*150(mm)

● The roller bracket used for matching the protruding buckle part of the aluminum tube can be easily connected to the connecting piece.

Reverse Blocker

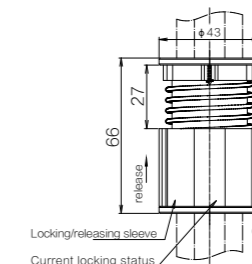


■ specifications

model	SQ-D32
material	Aluminum alloy 6065T6+stainless steel
product unitweight	52g/set
packaging quantity	180 set
packaging weight	9.6kg
packaging size	300*220*150(mm)

● A mechanism accessory that allows workpieces from one direction to pass through and prevents movement in the opposite direction.

Height Adjustment Stop

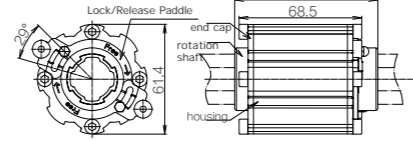
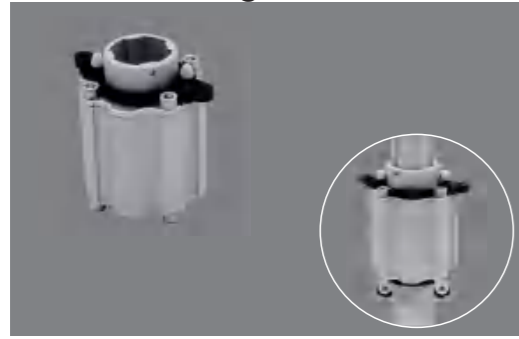


■ specifications

model	SQ-D33
material	Aluminum alloy 6005T6+cold rolled carbon steel+POM+spring
product unitweight	98g
packaging quantity	84 set
packaging weight	8.8kg
packaging size	300*220*170(mm)

● Components that can be quickly adjusted and maintained at any height are locked under their own weight.

With Locking Rotator

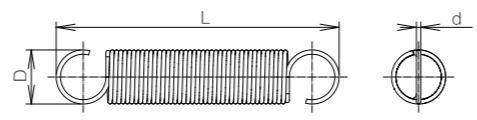


specifications

model	SQ-D34
material	Aluminum alloy 6005T6+cold rolled carbon steel+POM+zinc alloy+bearing+SOA
product unitweight	360g/set
packaging quantity	24 set
packaging weight	9.3kg
packaging size	310*240*170(mm)

Components that can only rotate in one direction after being locked, used for designing winding mechanisms or positioning mechanisms: After the knob is released, it can be unlocked and rotated in both positive and negative directions. It is designed with 8 protruding buckles for connection.

Light Tension Spring

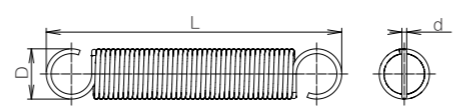


specifications

name	Light tension spring		
length	D10*d0.8*L51mm	D14*d1.0*L70mm	D16*d1.2*L106mm
model	SQ-D35	SQ-D36	SQ-D37
Single weight	5g	12g	27g

Used for mechanical mechanism release or reset action parts.

Medium Tension Spring

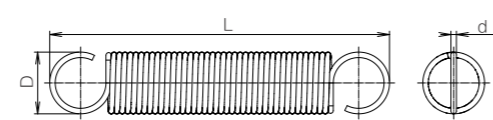


specifications

name	Medium tension spring		
length	D8*d0.9*L50mm	D12.5*d1.2*L75mm	D18*d1.6*L95mm
model	SQ-D38	SQ-D39	SQ-D40
Single weight	5g	14g	35g

Used for mechanical mechanism release or reset action parts.

Heavy Tension Spring

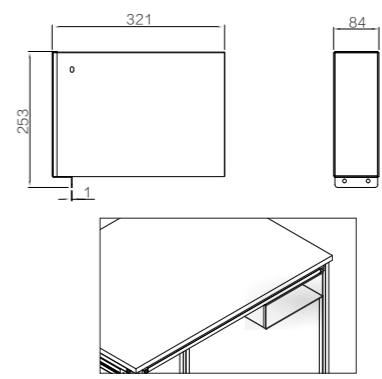
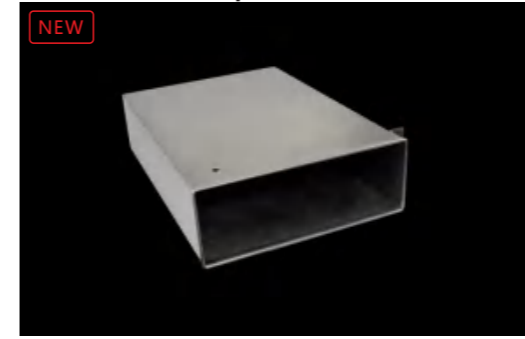


specifications

name	Heavy tension spring		
length	D8*d1.0*L54mm	D16*d1.6*L73mm	D16*d1.8*L100mm
model	SQ-D41	SQ-D42	SQ-D43
Single weight	5g	20g	36g

Used for mechanical mechanism release or reset action parts.

Document placement box

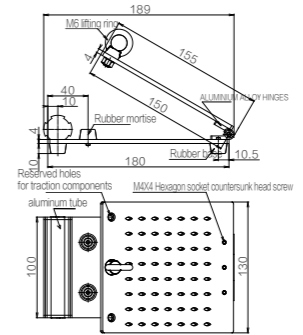
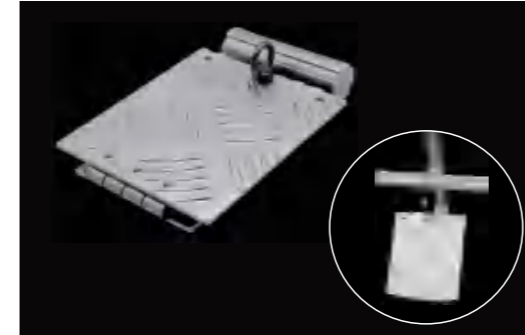


specifications

model	SQ-D100
material	stainless steel
product unitweight	/
packaging quantity	/
packaging weight	/
packaging size	/

Used for placing files or other items on the workstation.

SQedals

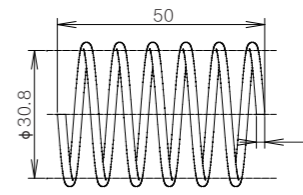
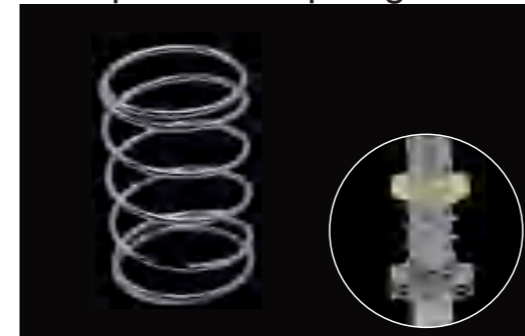


specifications

model	SQ-D45
material	Aluminum alloy 6065T6+stainless steel+rubber+PP
product unitweight	600g/set
packaging quantity	7 set
packaging weight	4.6kg
packaging size	300*240*150mm

The terminal foot switch used for separation or stopping can be simply connected and fixed with the main structure.

Compression Spring 1

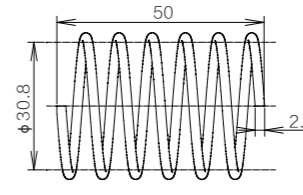
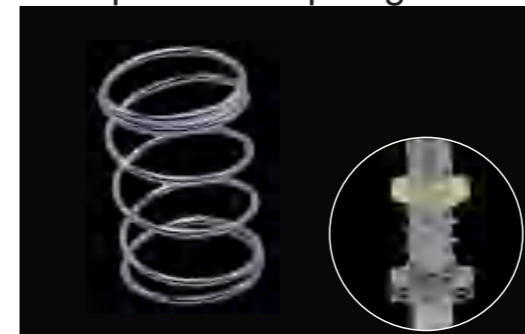


specifications

model	SQ-D46
material	spring steel
product unitweight	15.3g
packaging quantity	10个/bag
packaging weight	150g/bag
packaging size	ags

It can be installed into standard 28 series aluminum pipes to absorb impacts and other effects.

Compression Spring 2

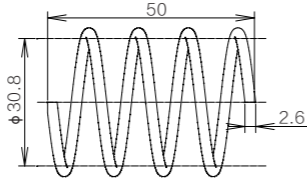
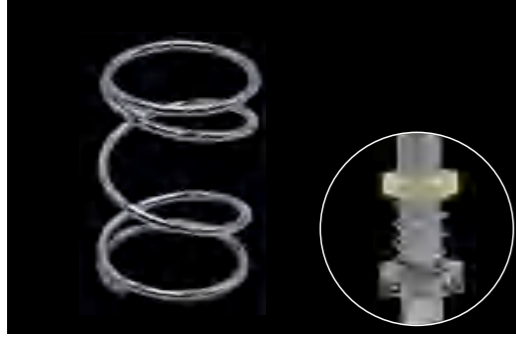


specifications

model	SQ-D47
material	spring steel
product unitweight	21g
packaging quantity	10个/bag
packaging weight	210g/bag
packaging size	in bags

It can be installed into standard 28 series aluminum pipes to absorb impacts and other effects.

Compression Spring 3

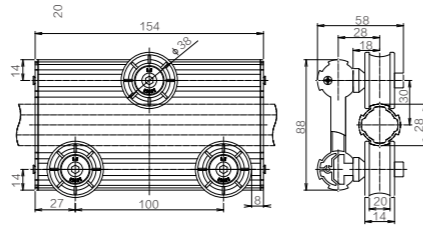
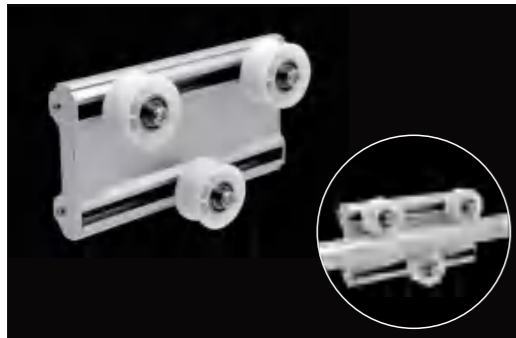


■ specifications

model	SQ-D48
material	spring steel
product unitweight	19g
packaging quantity	10↑/bag
packaging weight	190g/bag
packaging size	in bags

● It can be installed into standard 28 series aluminum pipes to absorb impacts and other effects.

Groove Cam Slide

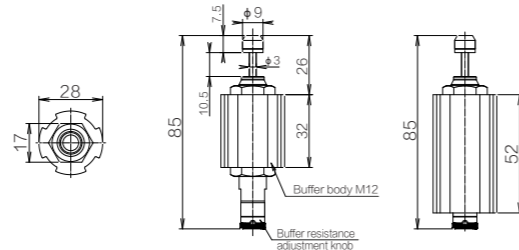


■ specifications

model	SQ-D54
material	Aluminum alloy 6065T6+POM+bearings+stainless steel
product unitweight	413g/set
packaging quantity	/
packaging weight	/
packaging size	/

● An auxiliary component that can smoothly slide on the protruding buckle of an aluminum tube using a groove bearing roller.

Adjustable Buffer Kit 1

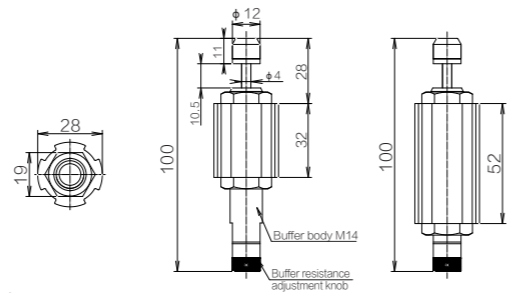


■ specifications

length	32mm	52mm
model	SQ-D55	SQ-D55L
Single weight	87g/set	110g/set

● Absorbing work impact device, the protruding buckle parts on all sides can be easily connected to the connecting parts.

Adjustable Buffer Kit 2

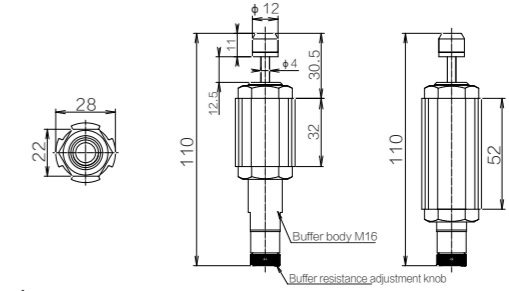


■ specifications

length	32mm	52mm
model	SQ-D56	SQ-D56L
Single weight	115g/set	136g/set

● Absorbing work impact device, the protruding buckle parts on all sides can be easily connected to the connecting parts.

Adjustable Buffer Kit 3

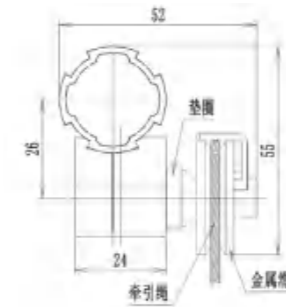


■ specifications

length	32mm	52mm
model	SQ-D57	SQ-D57L
Single weight	155g/set	171g/set

● Absorbing work impact device, the protruding buckle parts on all sides can be easily connected to the connecting parts.

U-shaped Pulley Assembly

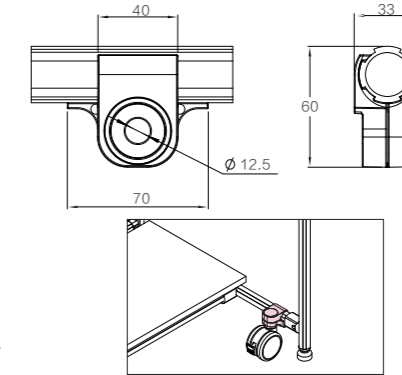


■ specifications

model	SQ-D59
material	carbon steel
product unitweight	20g
packaging quantity	/
packaging weight	/
packaging size	/

● Special components for two types of pulleys, in addition to kit products, can be combined and used independently.

Caster Connector

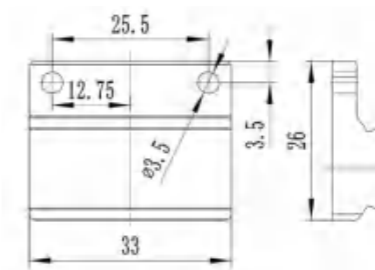


■ specifications

model	SQ-D101
material	aluminum alloy ADC12
product unitweight	93g
packaging quantity	75 set
packaging weight	7.4kg
packaging size	300*220*150(mm)

● Commonly used for the installation of M12 * 20 or M12 * 25 screw casters on 28 third-generation management equipment.

SQphotoelectric Switch Connector

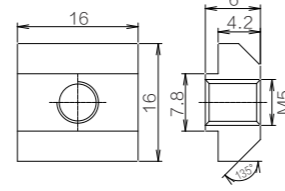
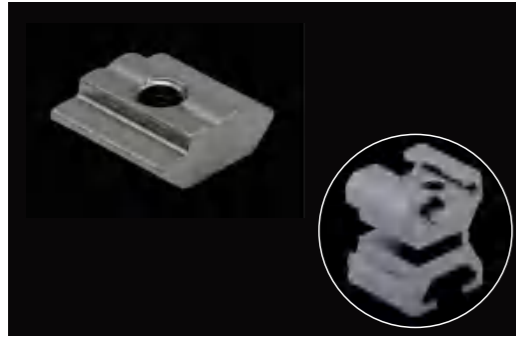


■ specifications

model	SQ-D71
material	aluminum alloy 6005T6
product unitweight	13.8g
packaging quantity	/
packaging weight	/
packaging size	300*220*150(mm)

● A component used for small photoelectric switches, please pay attention to the matching of hole spacing and aperture when selecting.

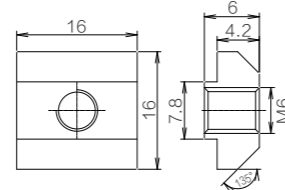
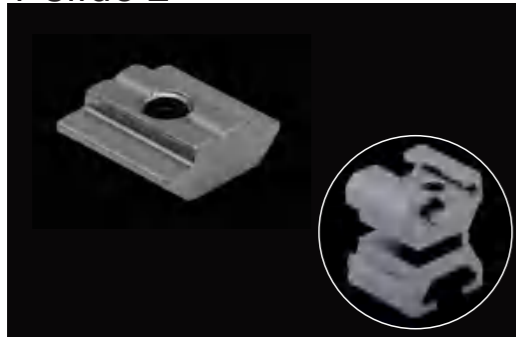
T Slide 1



specifications	
model	SQ-D72
material	Carbon steel CS
product unitweight	8g/pcs
packaging quantity	/
packaging weight	/
packaging size	in bags

● Used in conjunction with embedded joints and aluminum pipes with T-grooves.

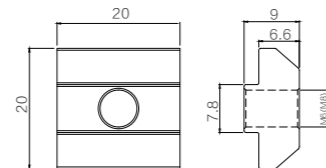
T Slide 2



specifications	
model	SQ-D73
material	Carbon steel CS
product unitweight	7g
packaging quantity	/
packaging weight	/
packaging size	in bags

● Used in conjunction with embedded joints and aluminum pipes with T-grooves.

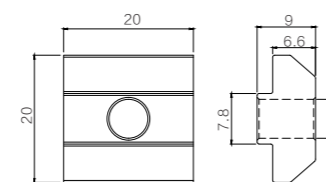
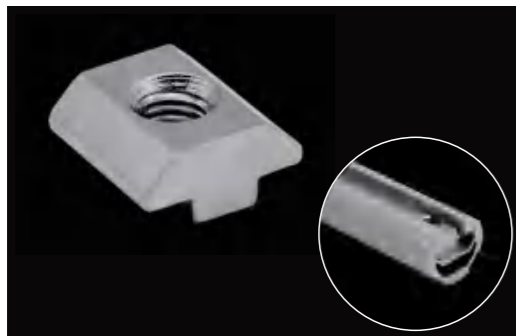
T Slide 3



specifications	
model	SQ-D74
material	Carbon steel CS
product unitweight	18g/pcs
packaging quantity	/
packaging weight	/
packaging size	in bags

● Used in conjunction with T-groove aluminum pipes (also suitable for 43T groove aluminum pipes).

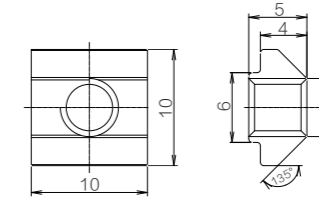
T Slide 4



specifications	
model	SQ-D75
material	Carbon steel CS
product unitweight	16g/pcs
packaging quantity	/
packaging weight	/
packaging size	in bags

● Used in conjunction with T-groove aluminum pipes (also suitable for 43T groove aluminum pipes).

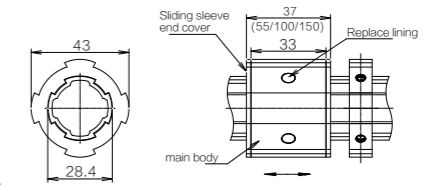
T Slide 5



specifications	
model	SQ-D76
material	Carbon steel CS
product unitweight	7g/个
packaging quantity	/
packaging weight	/
packaging size	in bags

● Equipped with 40 aluminum fluency strips and 60 aluminum fluency strips with side slots for use.

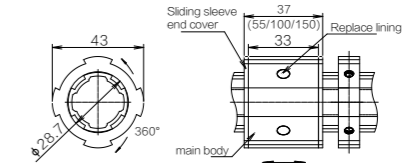
Slide As-linear Translation



specifications				
Linear translation sliding sleeve component				
name	37mm	55mm	100mm	150mm
length	37mm	55mm	100mm	150mm
model	SQ-D77	SQ-D78	SQ-D79	SQ-D80
product unit weight	32g/set	45g/set	77g/set	115g/set
packaging quantity	140set	112set	56set	35set
packaging weight	4.7kg	5.3kg	4.7kg	4.2kg
packaging size	300*220*150(mm)			

● Installed on 28 series aluminum pipes, it can achieve axial horizontal linear sliding, and various connectors can be installed with protruding buckles on all sides.

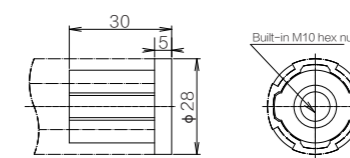
Slide As-linear Rotation



specifications				
Linear rotation sliding sleeve component				
name	37mm	55mm	100mm	150mm
length	37mm	55mm	100mm	150mm
model	SQ-D81	SQ-D82	SQ-D83	SQ-D84
product unit weight	32g/set	45g/set	77g/set	115g/set
packaging quantity	140set	112set	56set	35set
packaging weight	4.7kg	5.3kg	4.7kg	4.2kg
packaging size	300*220*150(mm)			

● Installed on 28 series aluminum pipes, it can achieve axial horizontal linear sliding and can also rotate at any angle around the axis. The protruding buckles on all sides can be used to install various connectors

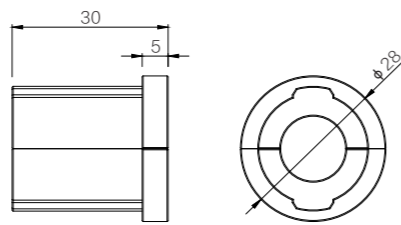
Heavy Split Footrest



specifications	
model	SQ-D85
material	aluminum alloy ADC-12
product unitweight	29g/set
packaging quantity	250 set
packaging weight	7.5kg
packaging size	300*220*150(mm)

● Used for installing fixed foot cups on lean management workbenches and shelves, suitable for scenarios with heavy loads.

Split Foot Rest

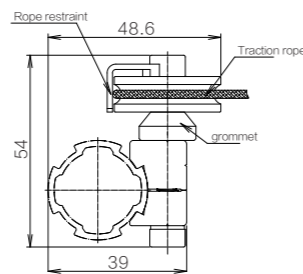


■ specifications

model	SQ-D86
material	Nylon glass fiber+carbon steel
product unitweight	/
packaging quantity	250set
packaging weight	/
packaging size	300*220*150(mm)

● Used for installing fixed foot cups on lean management workbenches and shelves, suitable for scenarios with relatively light loads.

Function Accessory A And U Groove Pulley Kit

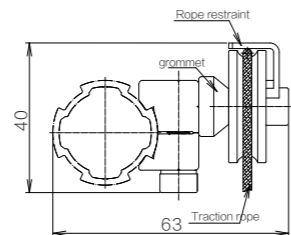


■ specifications

model	SQ-D88
material	Aluminum alloy 6065T6+cold rolled carbon steel+POM+bearings+stainless steel
product unitweight	60g/set
packaging quantity	/
packaging weight	/
packaging size	300*220*150(mm)

● Functional combination accessories, simple installation on the aluminum pipe buckle, guiding the direction of the lead wire.

Function Accessory B And U Groove Pulley Kit

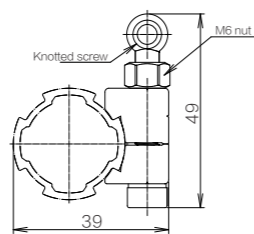


■ specifications

model	SQ-D89
material	Aluminum alloy 6065T6+cold rolled carbon steel+POM+bearings+stainless steel
product unitweight	60g/set
packaging quantity	/
packaging weight	/
packaging size	300*220*150(mm)

● Functional combination accessories, simple installation on the aluminum pipe buckle, guiding the direction of the lead wire.

Function Aid A And Knuckle Screw Set

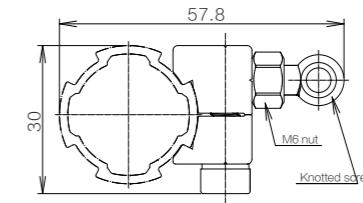


■ specifications

model	SQ-D90
material	Aluminum alloy 6065T6+stainless steel
product unitweight	30g/set
packaging quantity	/
packaging weight	/
packaging size	300*220*150(mm)

● Functional combination accessories, simply installed on the aluminum pipe buckle, used as extension springs or traction wire connection ends.

Function Aid B And Knuckle Screw Set

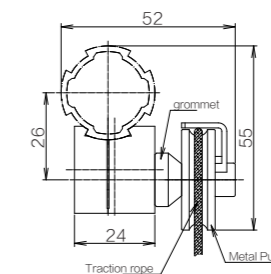


■ specifications

model	SQ-D91
material	Aluminum alloy 6065T6+stainless steel
product unitweight	30g/set
packaging quantity	/
packaging weight	/
packaging size	300*220*150(mm)

● Functional combination accessories, simply installed on the aluminum pipe buckle, used as extension springs or traction wire connection ends.

Double Hole Functional Accessory And U-groove Metal Pulley Kit

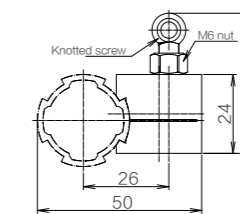


■ specifications

model	SQ-D92
material	Aluminum alloy ADC12+carbon steel+bearings+stainless steel
product unitweight	110g/set
packaging quantity	/
packaging weight	/
packaging size	300*220*150(mm)

● Functional combination accessories, simply installed on the aluminum pipe buckle, are generally used for positioning the traction machine of the gravity lifting mechanism.

Double Hole Function Accessory And Knuckle Screw Set

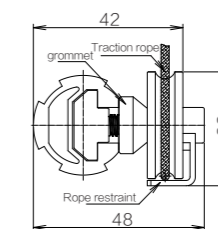


■ specifications

model	SQ-D93
material	Aluminum alloy ADC12+stainless steel
product unitweight	70g/set
packaging quantity	/
packaging weight	/
packaging size	300*220*150(mm)

● Functional combination accessories, simply installed in the aluminum pipe buckle area, used for fixing the end of the gravity lifting mechanism or the extension spring.

U-groove pulley and T-shaped slider 3 Kit

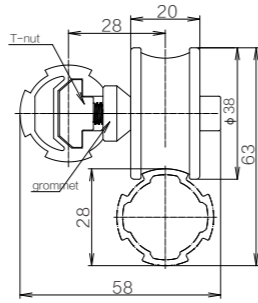


■ specifications

model	SQ-D94
material	Carbon steel+POM+bearings+stainless steel
product unitweight	50g/set
packaging quantity	/
packaging weight	/
packaging size	300*220*150(mm)

● Functional combination accessories, used in conjunction with T-groove aluminum pipes, guide the direction of the lead wire.

Grooved roller and t-slider 3 Kit

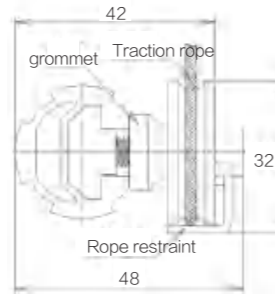


specifications

model	SQ-D95
material	Carbon steel+POM+bearings+stainless steel
product unitweight	
packaging quantity	70g/set
packaging weight	/
packaging size	300*220*150(mm)

● Functional combination accessories, used in conjunction with T-groove aluminum pipes, applied to planar moving mechanisms.

U-groove Metal Roller And T-shaped Slider 3 Kit

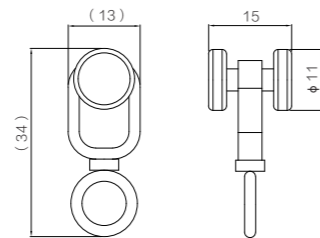
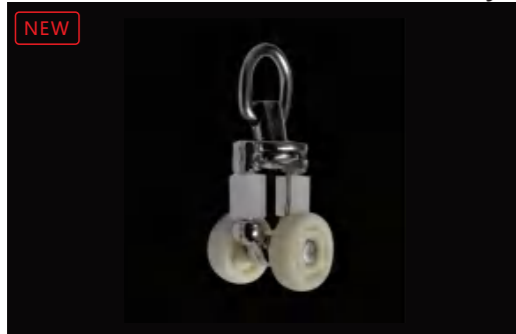


specifications

model	SQ-D96
material	Carbon steel+bearings+stainless steel
product unitweight	80g
packaging quantity	/
packaging weight	/
packaging size	300*220*150(mm)

● Functional combination accessories, used in conjunction with the installation of T-groove aluminum pipes, guide the direction of heavily stressed traction lines.

Electric Screwdriver Pulley

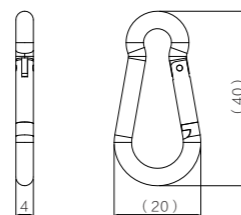
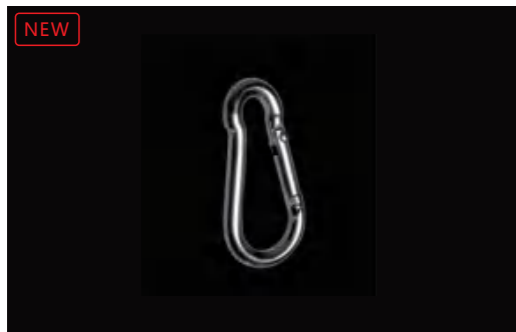


specifications

model	SQ-D104
material	/
product unitweight	/
packaging quantity	/
packaging weight	/
packaging size	/

● Installed inside the electric screwdriver tube, it can slide freely in a straight line or rotate, and is used for hanging spring balancers.

Slide Rail Hook Of Electric Screwdriver

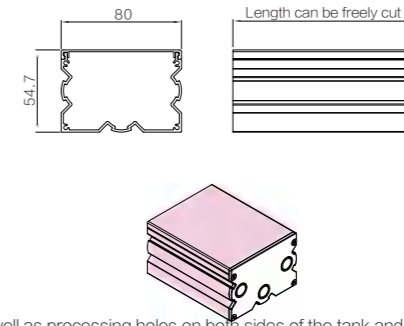
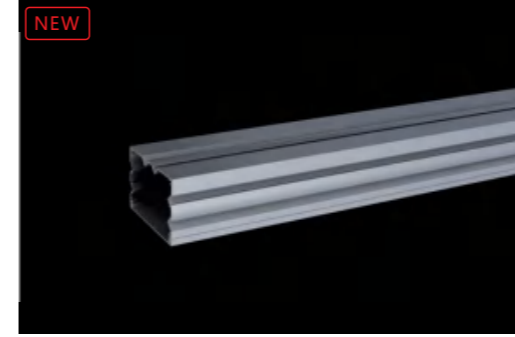


specifications

model	SQ-D105
material	/
product unitweight	/
packaging quantity	/
packaging weight	/
packaging size	/

● The elastic switch is convenient for opening and closing, and is installed on the electric screwdriver pulley for hanging the spring balancer.

Aluminum Alloy Trunking

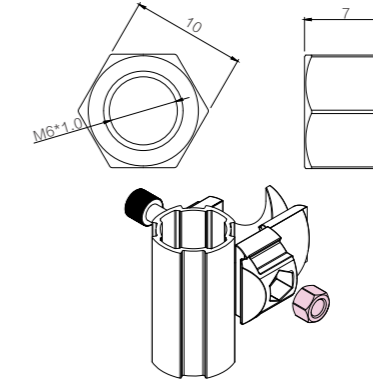


specifications

model	SQ-D106
material	aluminum alloy 6065T6
product unitweight	1232g/meter
packaging quantity	/
packaging weight	/
packaging size	/

● Used for protecting the wiring and wiring of the power system, as well as processing holes on both sides of the tank and installing power connectors. Equipped with dedicated end caps at both ends and designed with wiring holes. There are protrusions on the three sides of the trunking. The buckle can be easily connected to the frame, each with a length of 4 meters.

M6 Hexagon Flat Nut (thickened)

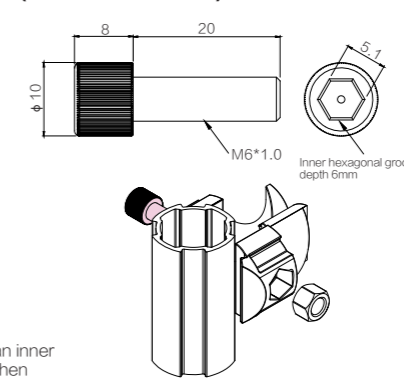
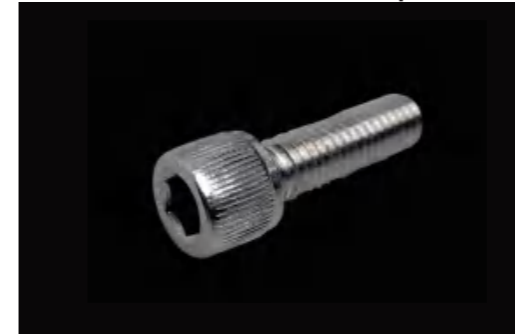


specifications

model	SQ-D107
material	carbon steel
product unitweight	3g
packaging quantity	/
packaging weight	/
packaging size	/

● Used as an installation accessory for most connectors.

M6 Socket Head Cap Screw (thickened)

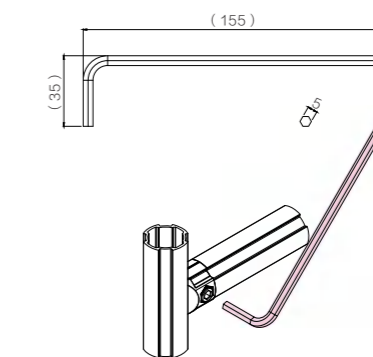
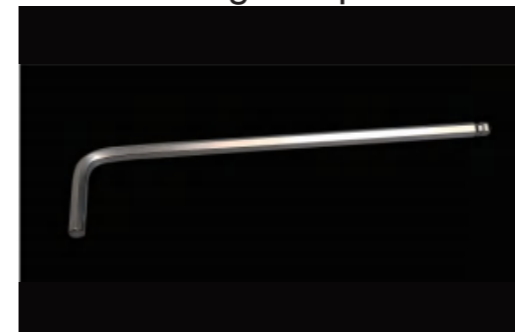


specifications

model	SQ-D108
material	carbon steel
product unitweight	6.8g
packaging quantity	/
packaging weight	/
packaging size	/

● Used as an installation accessory for most connecting parts, with an inner hexagonal groove depth of about 6mm, which is not easy to slip when locked with a wrench.

Inner Hexagon Spanner

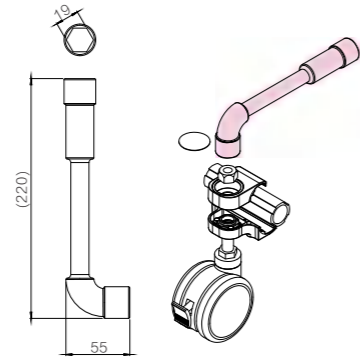


specifications

model	SQ-D109
material	alloy steel
product unitweight	/
packaging quantity	/
packaging weight	/
packaging size	/

● Used for disassembling most connecting parts, suitable for M6 hexagonal socket screws.

L-type Socket Wrench



■ specifications

model	SQ-D110
material	alloy steel
product unitweight	/
packaging quantity	/
packaging weight	/
packaging size	/

● Used for disassembling and assembling super silent casters and caster connectors, suitable for M12 hex nuts.

Hold-all



■ specifications

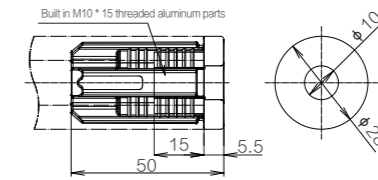
model	SQ-D111
size	275*230*82mm
Single weight	2.5kg

■ tool list

Allen wrench	8pcs
T-shaped hexagonal	1pcs
Tape measure	1pcs
Cross screwdriver A	2pcs
Cross screwdriver B	1pcs
Slotted screwdriver	1pcs
Metal art knife	1pcs
Measuring pen	1pcs
Adjustable wrench	1pcs
Pointed nose pliers	1pcs

● Used for the installation and transformation of lean tooling equipment, including 17 tools, suitable for use in multi clock production situations.

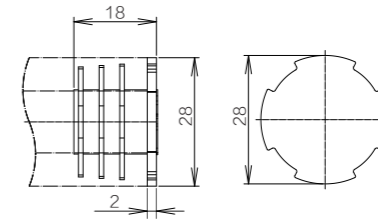
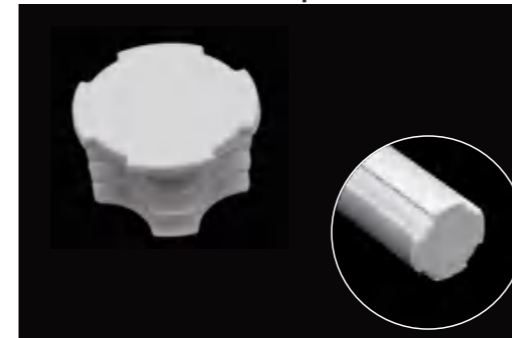
Integrated Fixed Foot Base



specifications	
model	SQ-E01
material	ABS
product unit weight	31.6g/set
packaging quantity	180(set)
packaging weight	5.7kg
packaging size	300*220*150(mm)

• Suitable for the 28 series aluminum tube special foot seat, standard M10 built-in nut, used for the installation of foot cups and screw casters.

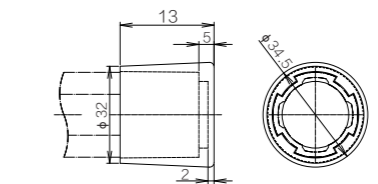
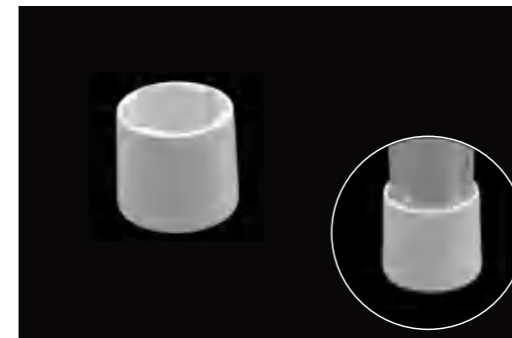
Foundation Top Cover



specifications	
model	SQ-E02
material	PP
product unit weight	2.1g/set
packaging quantity	550(set)
packaging weight	1.45kg
packaging size	300*220*150(mm)

• Used for the decoration and protection of the end of 28 basic aluminum pipes.

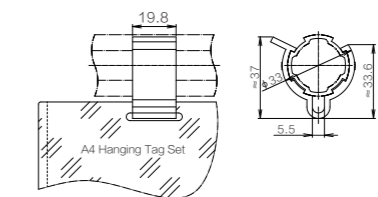
Foot Sleeve



specifications	
model	SQ-E03
material	PP
product unit weight	7.5g/set
packaging quantity	180(set)
packaging weight	1.68kg
packaging size	300*220*150(mm)

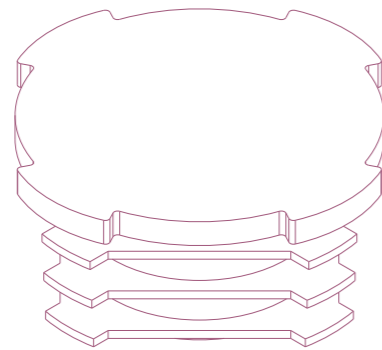
• Foot protection for 28 aluminum tubes that do not require height adjustment.

Tag Clasp



specifications	
model	SQ-E04
material	PVC
product unit weight	4.2g/pcs
packaging quantity	500(个)(set)
packaging weight	2.3kg
packaging size	300*220*150(mm)

• Used for hanging document sets such as A4 specifications, suitable for 28 series aluminum pipes, used for process cards and identification systems such as workbenches or material racks.



28mm Non metallic accessory series

28mm aluminum tube

28mm connector

28mm metal accessories

28mm Non-metallic accessories

43mm product

Fluency bar

Castor foot cup

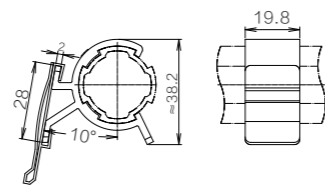
Module components

Application Scenario Case reference

Technical Parameter

Quality regulations matters needing attention

Label Buckle

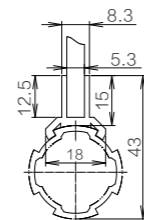
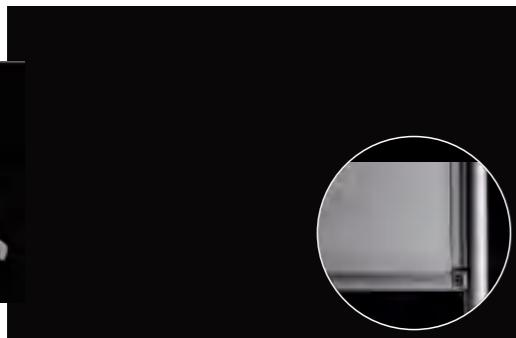


■ specifications

model	SQ-E05
material	PP
product unit weight	4.3g/pcs
packaging quantity	400(set)
packaging quantity	2kg
packaging weight	300*220*150(mm)

- Suitable for 28 series aluminum pipe special buckle, combined with T-shaped marking card, can be used in fluency racks, material racks, workbenches, and other occasions.

5.3mm SaQnel Slot

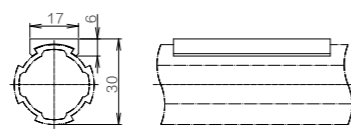
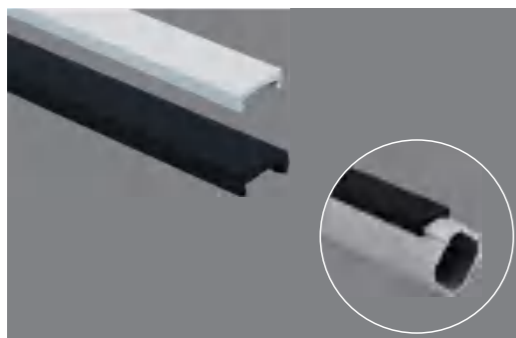


■ specifications

model	SQ-E06
material	PVC
product unit weight	143g/meter
packaging quantity	30(set)
packaging quantity	18.1kg
packaging weight	Bundling

- A dedicated card slot for enclosed panels, suitable for use with 5mm thick boards, and can also be used with workbench installation instructions, each with a length of 4 meters.

Flat anti Abrasion Buckle



■ specifications

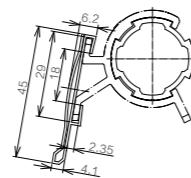
material	PVC
product unit weight	80g/meter
packaging quantity	50(set)
packaging quantity	16.1kg
packaging weight	Bundling

■ specifications

name	Flat anti wear buckle	
color	white	black
model	SQ-E07	SQ-E08

- Installed on the aluminum pipe buckle section to protect the aluminum pipes from damage, 4 meters each.

T-Slot Sign

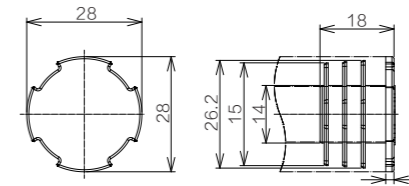


■ specifications

model	SQ-E09
material	PVC
product unit weight	102g/pcs
packaging quantity	100(set)
packaging quantity	40.2kg
packaging weight	Bundling

- It can be freely cut to the required length and used in conjunction with label clips. It can be used in situations such as fluency racks, material racks, workbenches, etc., with a length of 4m per piece.

Thin Wall Top Cover



■ specifications

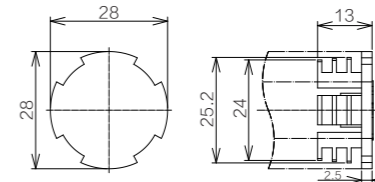
model	SQ-E10
material	PP
product unit weight	2g/pcs
packaging quantity	550pcs
packaging weight	1.55kg
packaging size	300*220*150(mm)

■ Applicable pipes

Thin walled foundation aluminum pipe SQ-A08

- Used for the end decoration and protection of 28 thin foundation aluminum pipes.

Reinforced Roof



■ specifications

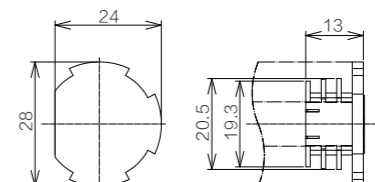
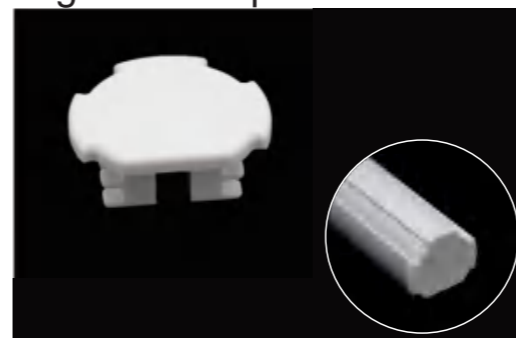
model	SQ-E11
material	PP
product unit weight	2g/pcs
packaging quantity	800(set)
packaging weight	2kg
packaging size	300*220*150(mm)

■ Applicable pipes

Reinforced aluminum pipe SQ-A04

- Used for 28 reinforced aluminum tube end decoration and protection.

T-groove Top Cover



■ specifications

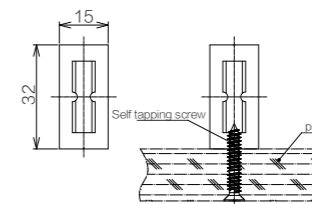
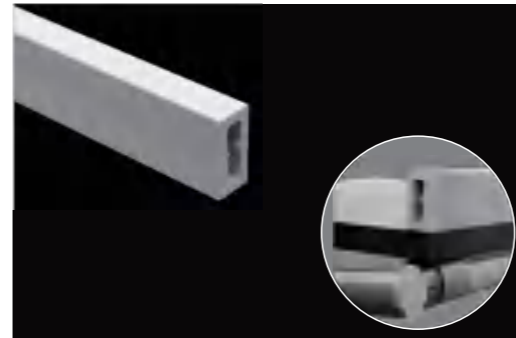
model	SQ-E12
material	PP
product unit weight	2.1g/pcs
packaging quantity	900(set)
packaging weight	2.2kg
packaging size	300*220*150(mm)

■ Applicable pipes

T-groove aluminum pipe SQ-A03

- Used for the end decoration and protection of 28T slot aluminum pipes.

Baffle bar

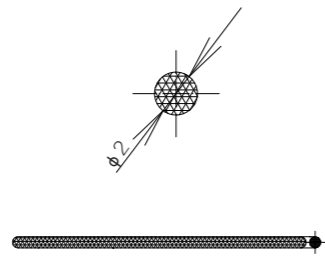
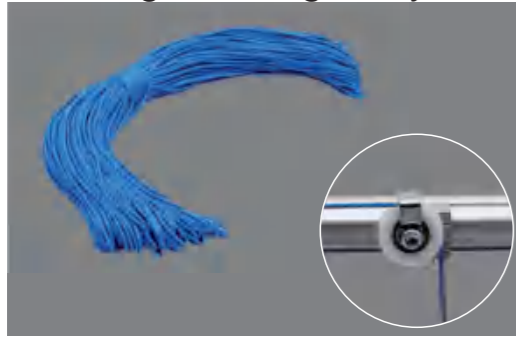


■ specifications

model	SQ-E13
material	PVC
product unit weight	556g/meter
packaging quantity	10(set)
packaging weight	23.4kg
packaging size	Bundling

- Used for table panels or material layers and intervals, each with a length of 4 meters.

2 High Strength Nylon Rope

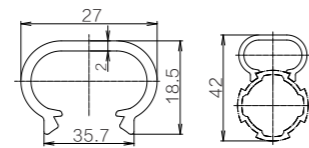


■ specifications

model	SQ-E14
material	nylon
product unit weight	290g/roll
packaging quantity	100 meters/roll
packaging size	0.29kg
packaging weight	/

- The traction of the active or triggered mechanism, with a maximum load of 20kg.

IConcealed Wire Slot

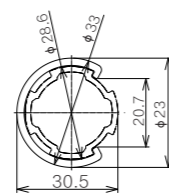
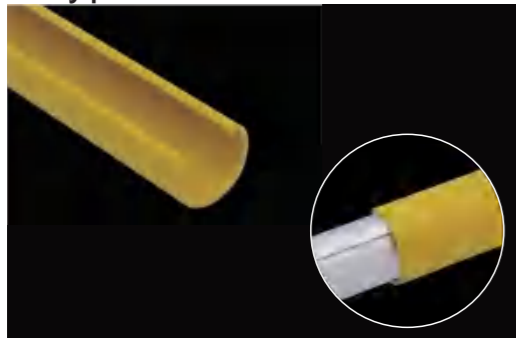


■ specifications

model	SQ-E15
material	PVC
product unit weight	200g/meter
packaging quantity	20(set)
packaging size	15kg
packaging weight	Bundling

- Used for protection and standardization of power lines or signal light lines, simply buckle into the protruding buckle part of the aluminum tube, 4 meters each.

C-type Bar SQrotective Sleeve



■ specifications

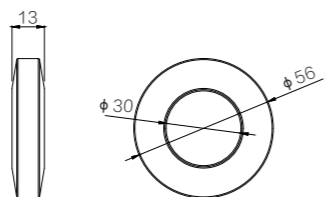
material	PVC
product unit weight	225g/meter
packaging quantity	30(set)
packaging size	27.7kg
packaging weight	Bundling

■ specifications

name	C-type bar protective sleeve	
color	yellow	grey
model	SQ-E16	SQ-E17

- Snap in the aluminum pipe buckle to protect the aluminum pipe from damage, and can also be used as a warning for the mechanism's action parts, each with a length of 4 meters.

Elastic Washer



■ specifications

model	SQ-E18
material	PU
product unit weight	15g/pcs
packaging quantity	/
packaging size	/
packaging weight	/

- The end of the sliding mechanism is fixed to provide cushioning, and when used in conjunction with a compression spring, it can absorb impact and locate.

Transparent SQC Tube



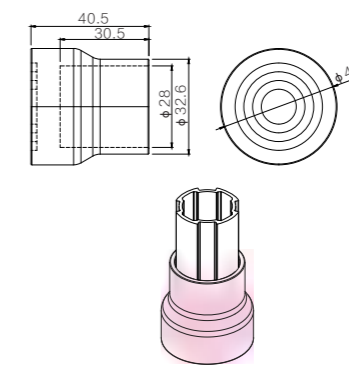
Self determined length

■ specifications

model	SQ-E19
material	SQC
product unit weight	143g/meter
packaging quantity	10(set)
packaging weight	6kg/bag
packaging size	Bundling

- Used to protect aluminum pipes from damage or to rotate transition mechanism parts.

Rubber Foot Cover

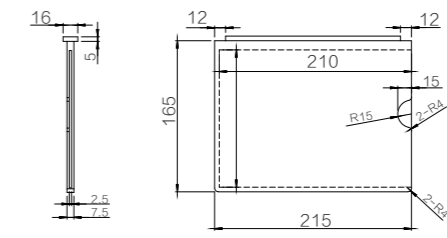


■ specifications

model	SQ-E20
material	rubber
product unit weight	21g/pcs
packaging quantity	120pcs
packaging weight	2.8kg
packaging size	300*220*150(mm)

- Installed at the end of a 28mm lean pipe as a foundation.

Station Nameplate B

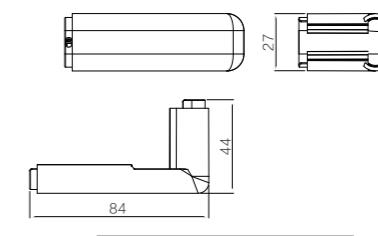


■ specifications

model	SQ-E28
material	Transparent acrylic
product unit weight	200g
packaging quantity	/
packaging weight	/
packaging size	/

- Used to indicate the station name on the lean management workbench, and the content can be changed by changing the A5 paper.

90 ° Concealed Trunking A

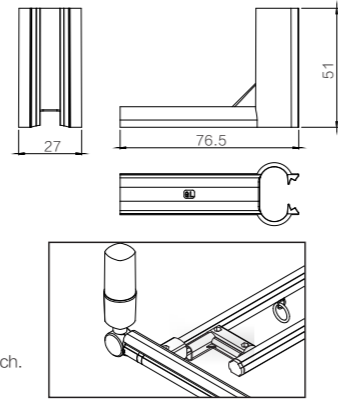


■ specifications

model	SQ-E29
material	PP
product unit weight	/
packaging quantity	/
packaging weight	/
packaging size	/

- Used for concealed wiring at the corner of the end of the wiring column on the lean pipe workbench.

90 ° Concealed Trunking B

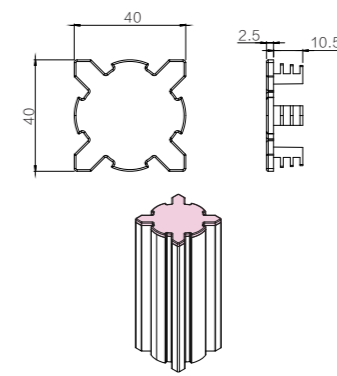
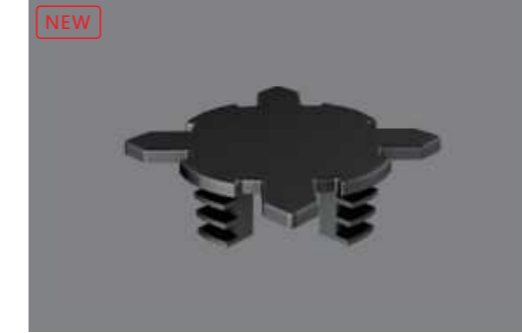


■ specifications

model	SQ-E30
material	pp
product unit weight	/
packaging quantity	/
packaging size	/
packaging weight	/

● Used as a hidden line for the lighting line on the lean management workbench.

Lean Aluminum Profile Cover

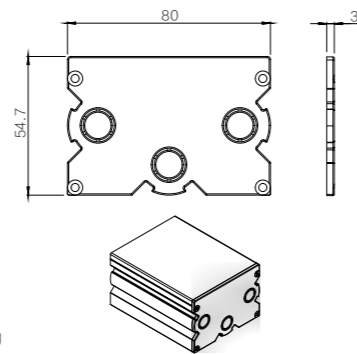


■ specifications

model	SQ-E34
material	pp
product unit weight	/
packaging quantity	/
packaging size	/
packaging weight	/

● Used for end decoration and protection of lean aluminum profiles.

Aluminum alloy trunking cover

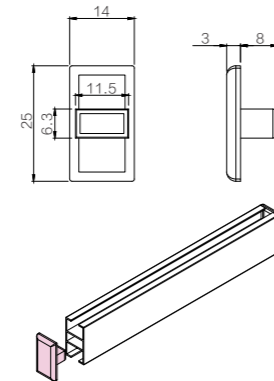
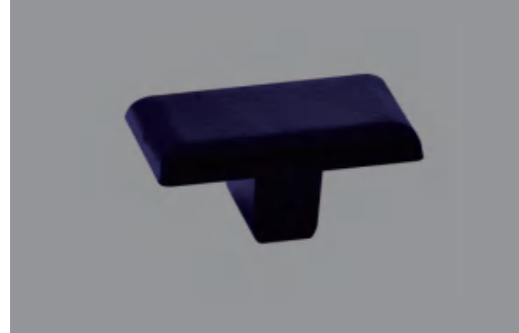


■ specifications

model	SQ-E35
material	PP
product unit weight	10g/pcs
packaging quantity	/
packaging size	/
packaging weight	/

● Dedicated to the ports on both sides of aluminum alloy trunking, playing a sealing and decorative role.

SQrocess Card Aluminum Strip Cover

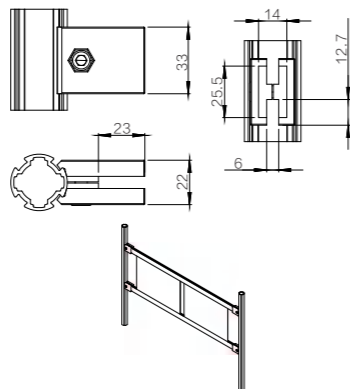
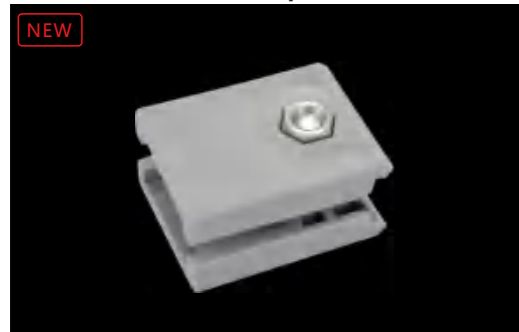


■ specifications

model	SQ-E36
material	PP
product unit weight	1.3g/pcs
packaging quantity	/
packaging size	/
packaging weight	/

● Dedicated to the ports on both sides of the process card aluminum strip, providing protection and decoration.

Aluminum Strip Connector Of SQrocess Card



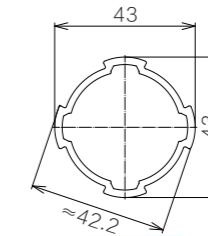
■ specifications

model	SQ-C01
material	ABS
product unit weight	22g/set
packaging quantity	228(set)
packaging size	5.3kg
packaging weight	300*220*150(mm)

● Used to install process card aluminum strips on the third generation tube.

- 28mm aluminum tube
- 28mm connector
- 28mm metal accessories
- 28mm Non-metallic accessories
- 43mm product
- Fluency bar
- Castor foot cup
- Module components
- Application Scenario Case reference
- Technical Parameter
- Quality regulations matters needing attention

Internal Straight Head



The 43 series universal standard aluminum tube is a basic product used for the main structure, suitable for mechanisms with better rigidity and strength than the 28 series, and can be shared with the 28 series joints.

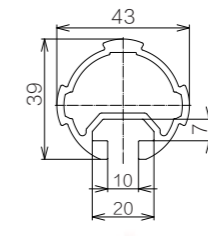
■ specifications

model	SQ-A21
length	4(m)
material	aluminum alloy 6005T6
product unit weight	740g/m
Packaging quantity	10(set)

■ Related accessories

43 Top cover	SQ-E32
43 metal plug	SQ-D103
43 foot cover	SQ-E33

Internal Straight Head



The T-shaped groove can be fitted with a T-shaped slider, other functional accessories can be installed, or casters can be installed.

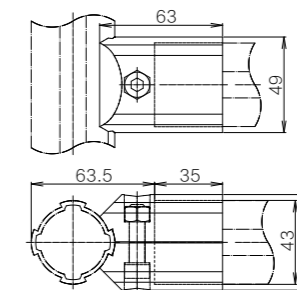
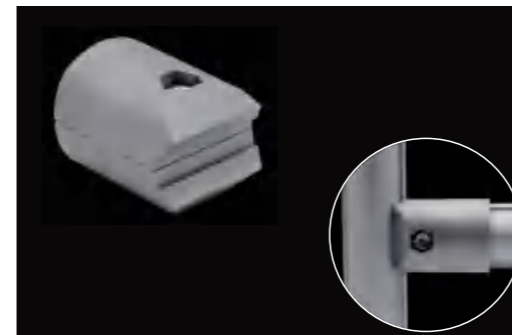
■ specifications

model	SQ-A22
length	4(m)
material	aluminum alloy 6005T6
product unit weight	985g/m
Packaging quantity	5(set)

■ Related accessories

43 Top cover	SQ-E32
--------------	--------

External Direct Connector



Foundation external joint of 90° structure.

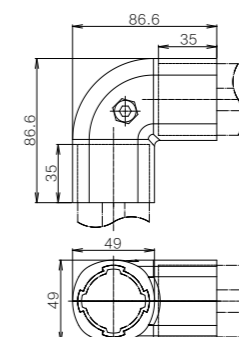
■ specifications

model	SQ-B45
material	aluminum alloy ADC-12
product unit weight	170g/set
Packaging quantity	66set(set)
packaging weight	11.5kg
packaging size	310*240*170(mm)

■ Supporting accessories

- Hexagon socket round head screw (strength grade 8.8) M8x30, S=6, K=8, galvanized.
- Hexagon nut (strength grade 8.8) M8, M=8, S=13, galvanized.

90° External Bend Joint



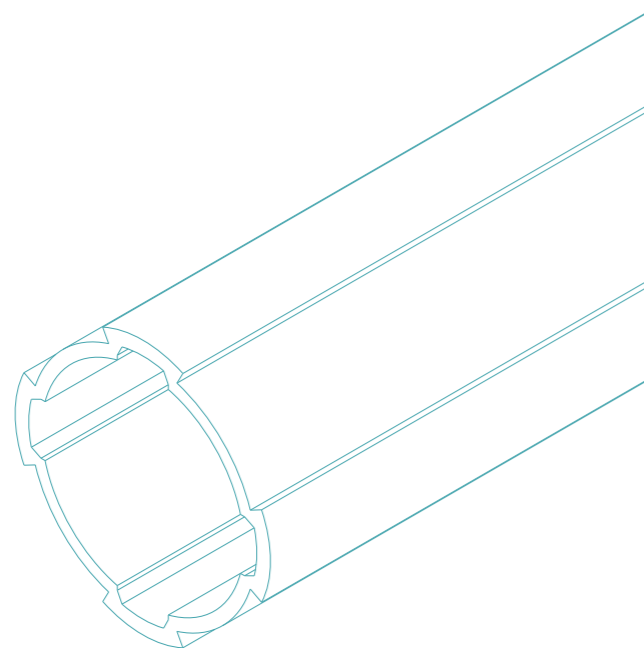
Used for 90 degree connection of two wire rods.

■ specifications

model	SQ-B46
material	aluminum alloy ADC-12
product unit weight	283g/set
Packaging quantity	30(set)
packaging weight	8.8kg
packaging size	310*240*170(mm)

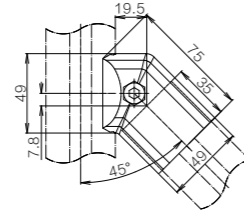
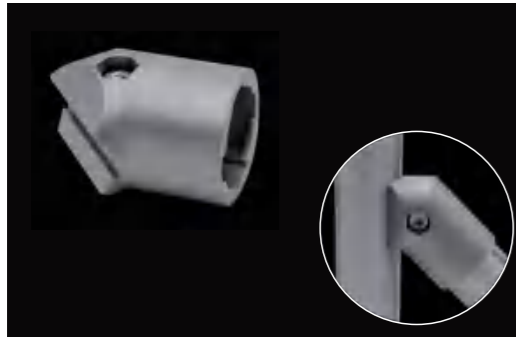
■ Supporting accessories

- Hexagon socket round head screw (strength grade 8.8) M8x30, S=6, K=8, galvanized.
- Hexagon nut (strength grade 8.8) M8, M=8, S=13, galvanized.



43mm Product Series

45 ° External Joint



■ specifications

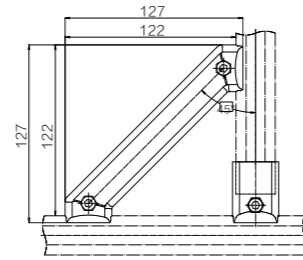
model	SQ-B47
material	aluminum alloy ADC-12
Product unit weight	170g/set
Packaging quantity	57(set)
Packaging size	10kg
packaging weight	310*240*170(mm)

■ Supporting accessories

- Hexagon socket round head screw (strength grade 8.8) M8x30, S=6, K=8, galvanized.
- Hexagon nut (strength grade 8.8) M8, M=8, S=13, galvanized.

• 45 ° reinforced connection for right angles or facades; Enhance the rigidity of the frame.

45 ° Reinforced Long Joint



■ specifications

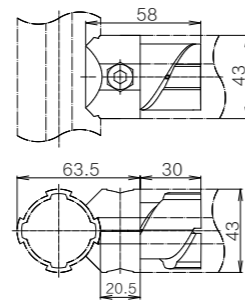
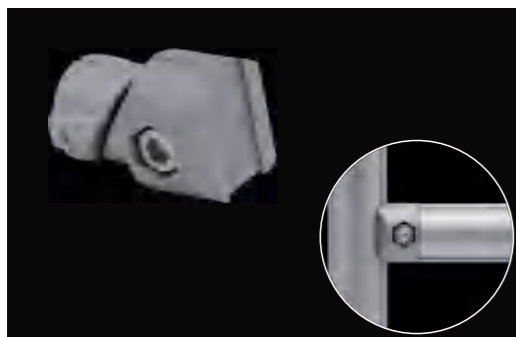
model	SQ-B48
material	aluminum alloy ADC-12
Product unit weight	182g/set
Packaging quantity	55(set)
Packaging size	10.5kg
packaging weight	310*240*170(mm)

■ Supporting accessories

- Hexagon socket round head screw (strength grade 8.8) M8x30, S=6, K=8, galvanized.
- Hexagon nut (strength grade 8.8) M8, M=8, S=13, galvanized.

• Used for local reinforcement at right angle connections (can also be installed on the outer wall buckle of 28mm pipes).

Internal Straight Head



■ specifications

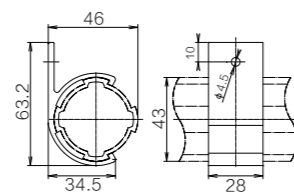
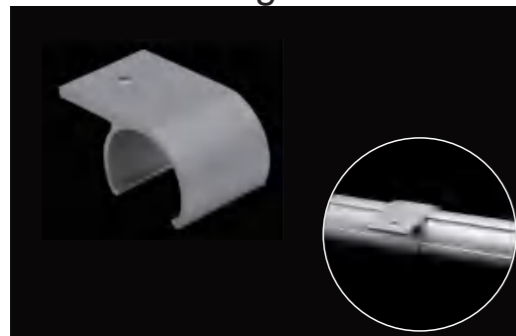
model	SQ-B52
material	aluminum alloy ADC-12
Product unit weight	129g/set
Packaging quantity	128(set)
Packaging size	16.8kg
packaging weight	310*240*170(mm)

■ Supporting accessories

- Hexagon socket round head screw (strength grade 8.8) M8x30, S=6, K=8, galvanized.
- Hexagon nut (strength grade 8.8) M8, M=8, S=13, galvanized.

• A semi built-in connector with the same appearance size as an aluminum tube, suitable for occasions that value appearance.

Platen Fixing Buckle



■ specifications

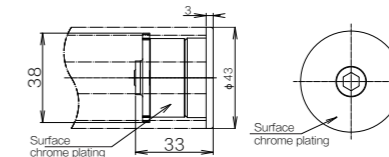
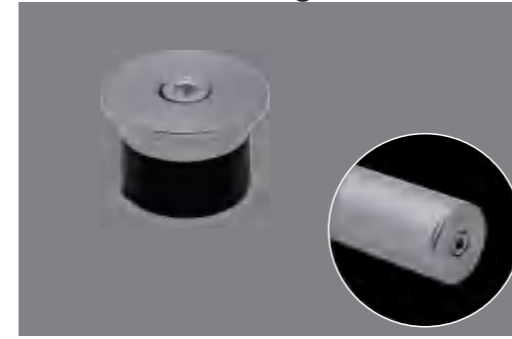
model	SQ-D102
material	aluminum alloy 6005T6
Product unit weight	24g/set
Packaging quantity	150(set)
Packaging size	4kg
packaging weight	310*240*170(mm)

■ Supporting accessories

- Cross recessed countersunk head tapping screw M4, DK=8.4, M=4.6.

• Used for fixing the table panel to the frame (insert the required clips before the frame is formed).

43 Metal SPlug

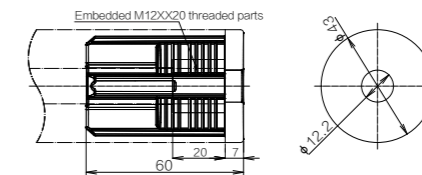
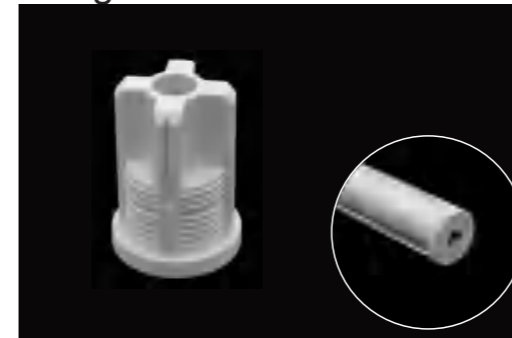


■ specifications

model	SQ-D103
material	Rubber+carbon steel
product unit weight	139g/set
Packaging quantity	/
packaging weight	/
packaging size	310*240*170(mm)

• Used for the decoration and protection of the end of 43 basic aluminum pipes, or for high-end requirements.

Integrated Fixed Foot Base

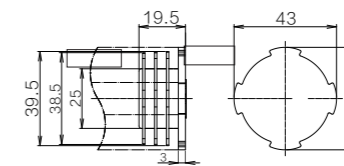


■ specifications

model	SQ-E31
material	ABS
product unit weight	66g/pcs
Packaging quantity	100(set)
packaging weight	6.9kg
packaging size	310*240*170(mm)

• Special foot seat suitable for 43 series aluminum pipes, standard M12 built-in nut, used for the installation of foot cups or casters.

43 Top Cover

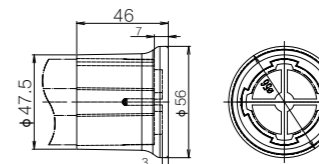
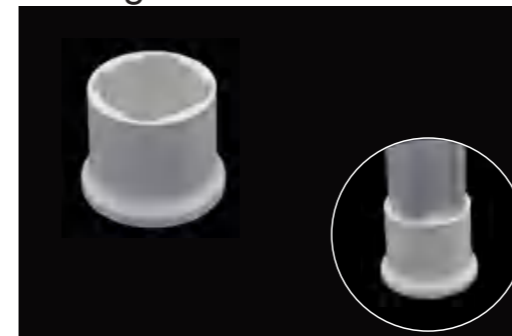


■ specifications

model	SQ-E32
material	PP
product unit weight	6g/set
Packaging quantity	300set(set)
packaging weight	2.1kg
packaging size	310*240*170(mm)

• Used for the decoration and protection of the aluminum tube end of 43 basic lines.

43 Leg Sleeve



■ specifications

model	SQ-E33
material	PP
product unit weight	30g/pcs
Packaging quantity	70(set)
packaging weight	2.4kg
packaging size	310*240*170(mm)

• Foot protection for 43 aluminum tubes that do not require height adjustment.

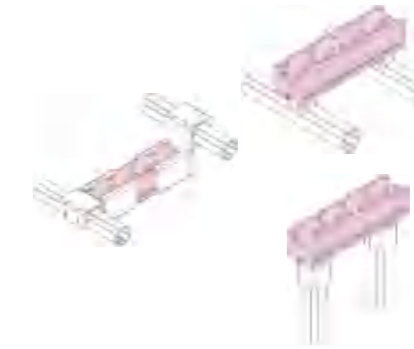
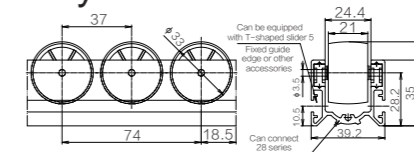
40 Aluminum White Arc Fluency Bar



• Curved surface roller, with low friction coefficient, excellent sliding performance, quiet operation, and a resin supported pin shaft structure, it is not easy to produce metal powder, and the roller wheelbase is 37mm.

■ specifications and model

color	white	grey
model	SQ-F01	SQ-F02

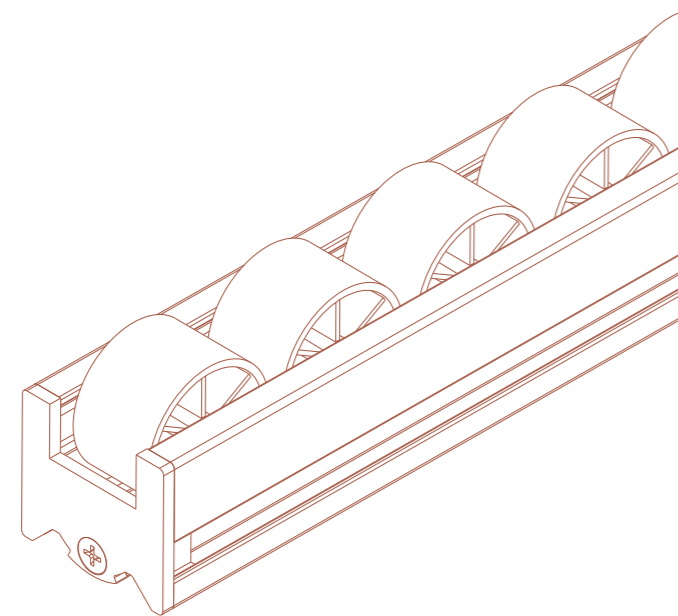


■ specifications

Product unit weight	1135g/m
Standard length	4m
Packaging quantity	4(set)
material	aluminum alloy+PP
surface treatment	Anodization

■ Related accessories

- 40 fluent strip flat joint SQ-F15
- 40 Fluent Bar Low Joint SQ-F16
- External direct connector SQ-B01
- 90° cross joint SQ-B04
- 40 aluminum fluency strip cover SQ-F24



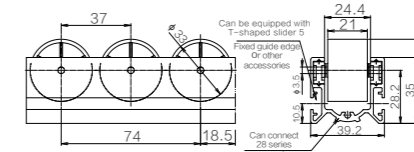
40 Aluminum Flat Strip



• Flat type roller, smooth and stable sliding, quiet operation, adopts a resin supported pin shaft structure, which is not easy to produce metal powder, and the roller wheelbase is 37mm.

■ specifications and model

color	white	grey
model	SQ-F04	SQ-F05

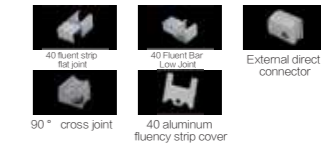


■ specifications

Product unit weight	1135g/m
Standard length	4m
Packaging quantity	4(set)
material	Aluminum alloy+PP
surface treatment	anodic oxidation

■ Related accessories

- 40 fluent strip flat joint SQ-F15
- 40 Fluent Bar Low Joint SQ-F16
- External direct connector SQ-B01
- 90° cross joint SQ-B04
- 40 aluminum fluency strip cover SQ-F24



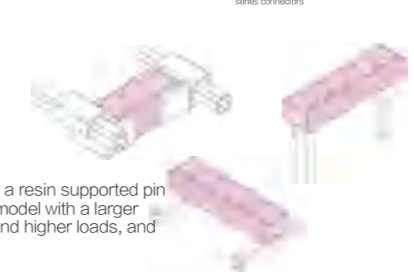
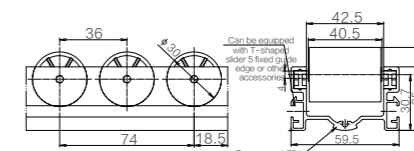
60 Aluminum Flat Strip



• Flat type roller, smooth and stable sliding, quiet operation, adopts a resin supported pin shaft structure, which is not easy to produce metal powder. The model with a larger contact surface between the workpiece and the roller can withstand higher loads, and the roller wheelbase is 37mm.

■ specifications and model

颜色	white	grey
型号	SQ-F08	SQ-F09



■ specifications

Product unit weight	1470g/m
Standard length	4m
Packaging quantity	4(set)
material	Aluminum alloy+PP
surface treatment	anodic oxidation

■ Related accessories

- 60 fluent strip flat joint SQ-F18
- 60 Fluent Bar Low Joint SQ-F19
- External direct connector SQ-B01
- 90° cross joint SQ-B04
- 60 aluminum fluency strip cover SQ-F26



Fluency Bar Series

28mm aluminum tube

28mm connector

28mm metal accessories

28mm Non-metallic accessories

43mm product

Fluency bar

Castor foot cup

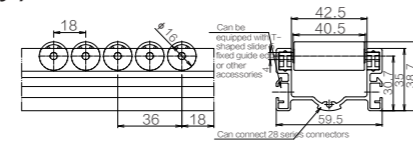
Module components

Application Scenario Case reference

Technical Parameter

Quality regulations matters needing attention

60 Aluminum Flat Strip(Ferry)



Specification and model

color	white
model	SQ-F13

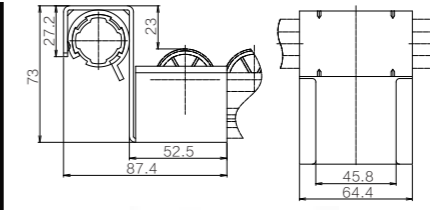
● The smaller pitch increases the friction resistance of the workpiece, making it suitable for use in cardboard boxes or honeycomb PVC soft material boxes. The roller wheelbase is 18mm.

specifications

Product unit weight	1617g
Standard length	4m
Packaging quantity	4 sets
material	Aluminum alloy+PP
Surface Treatment	anodic oxidation

- Related accessories**
- 60 round fluent strip flat joint SQ-F21
 - 60 small wheel fluent bar low joint SQ-F22
 - External direct connector SQ-B01
 - 90° cross joint SQ-B04
 - 60 aluminum fluency strip cover SQ-F26

60 Fluent Low Connector



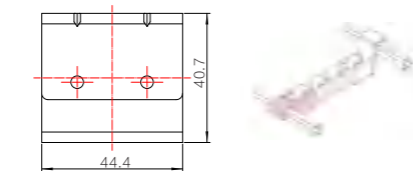
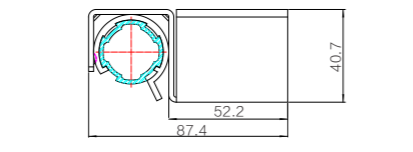
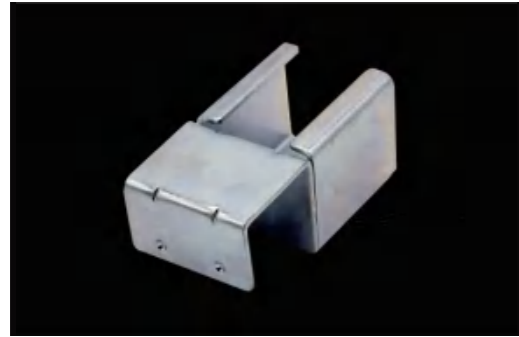
specifications

model	SQ-F19
material	Cold rolled carbon steel CS
Product unit weight	259g/pcs
Packaging quantity	34pcs
packaging size	300*220*150mm
packaging weight	9.1kg

- Related accessories**
- 60 aluminum flat rotating strip SQ-F08
 - 60 aluminum flat rotating strip SQ-F09
 - 60 joint anti wear sleeve SQ-F27

● Used in conjunction with the locator wear sleeve, for the output end of the product on the fluent strip in third generation management scenarios.

40 Fluent Flat Joint



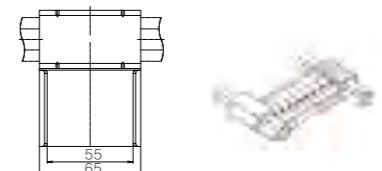
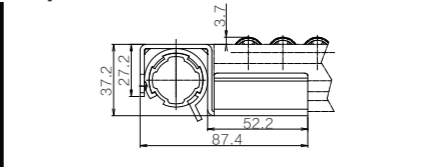
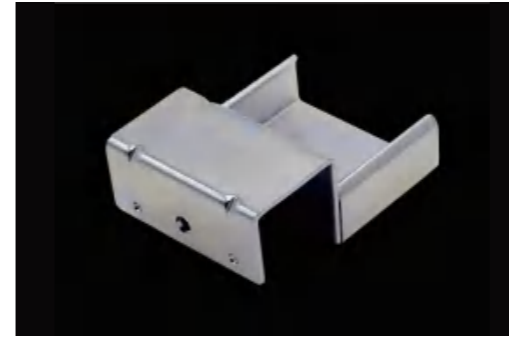
specifications

model	SQ-F15
material	Cold rolled carbon steel CS
Product unit weight	177g/pcs
Packaging quantity	66pcs
Packaging size	300*220*150mm
Packaging weight	12kg

- Related accessories**
- 40 aluminum arc wheel fluent strip SQ-F01
 - 40 aluminum arc wheel fluent strip SQ-F02
 - 40 aluminum flat rotating strip SQ-F04
 - 40 aluminum flat rotating strip SQ-F05
 - 40 joint anti wear sleeve SQ-F25

● Used in conjunction with the locator wear sleeve, for the input end of the product on the fluency strip in third generation management scenarios.

60 Small Wheels Smooth Strip Flat Joint



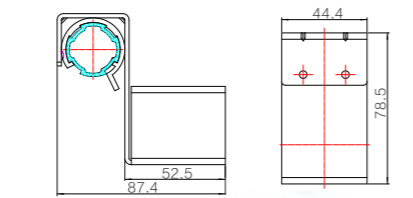
specifications

model	SQ-F21
material	Cold rolled carbon steel CS
Product unit weight	185g/pcs
Packaging quantity	80pcs
packaging size	300*220*150mm
packaging weight	15.1kg

- Related accessories**
- 60 aluminum flat rotating strip (small wheel) SQ-F13
 - 60 joint anti wear sleeve SQ-F27

● Fixed at the waist of the fluency strip, used in conjunction with the locator wear sleeve, for the input end of fluency strip products in third generation management scenarios.

40 Fluent Low Connector



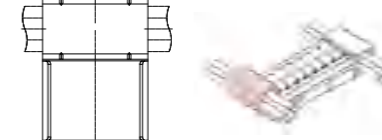
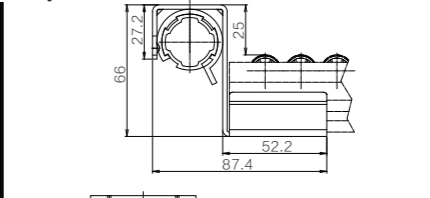
specifications

model	SQ-F16
material	Cold rolled carbon steel CS
Product unit weight	202g/pcs
Packaging quantity	42pcs
Packaging size	300*220*150mm
Packaging weight	8.8kg

- Related accessories**
- 40 aluminum arc wheel fluent strip SQ-F01
 - 40 aluminum arc wheel fluent strip SQ-F02
 - 40 aluminum flat rotating strip SQ-F04
 - 40 aluminum flat rotating strip SQ-F05
 - 40 joint anti wear sleeve SQ-F25

● Used in conjunction with the locator wear sleeve, for the output end of the product on the fluent strip in third generation management scenarios.

60 Small Wheels Fluently Strip Low Connector



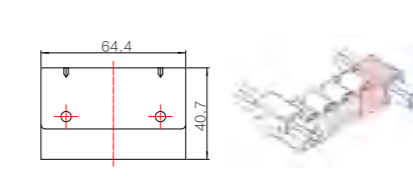
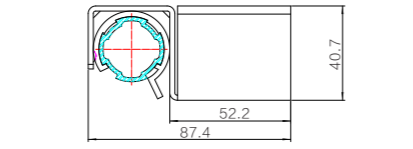
specifications

model	SQ-F22
material	Cold rolled carbon steel CS
Product unit weight	215g/pcs
Packaging quantity	48pcs
packaging size	300*220*150mm
packaging weight	10.6kg

- Related accessories**
- 60 aluminum flat rotating strip (small wheel) SQ-F13
 - 60 joint anti wear sleeve SQ-F27

● Fixed at the waist of the fluency strip, used in conjunction with the locator wear sleeve, for the output end of fluency strip products in third generation management scenarios.

60 Fluent Flat Joint



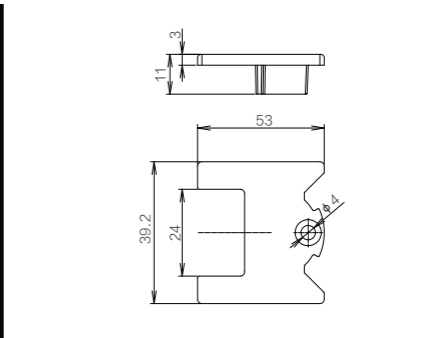
specifications

model	SQ-F18
material	Cold rolled carbon steel CS
Product unit weight	231g/pcs
Packaging quantity	36pcs
Packaging size	300*220*150mm
Packaging weight	8.5kg

- Related accessories**
- 60 aluminum flat rotating strip SQ-F08
 - 60 aluminum flat rotating strip SQ-F09
 - 60 joint anti wear sleeve SQ-F27

● Used in conjunction with the locator wear sleeve, for the input end of the product on the fluency strip in third generation management scenarios.

40 Aluminum Fluency Strip Cover



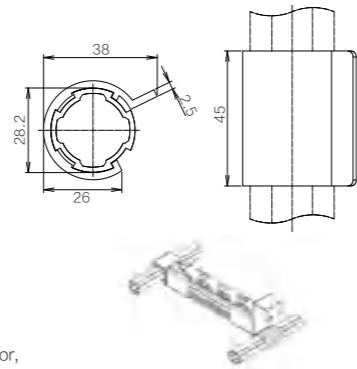
specifications

model	SQ-F24
material	PP
Product unit weight	3.2g/pcs
Packaging quantity	600pcs
packaging size	300*220*150mm
packaging weight	2.2kg

- Related accessories**
- 40 aluminum arc wheel fluent strip SQ-F01
 - 40 aluminum arc wheel fluent strip SQ-F02
 - 40 aluminum flat rotating strip SQ-F04
 - 40 aluminum flat rotating strip SQ-F05

● 40 aluminum alloy fluent strip universal protective end cover, used for decoration, protection, sealing, and other functions.

40 Joint Wear Sleeve



Specifications

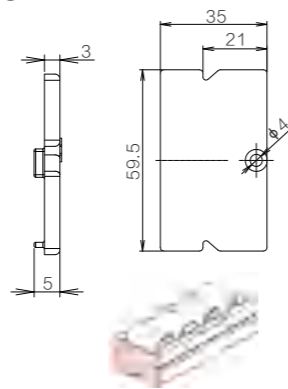
model	SQ-F25
material	PP
Product unit weight	8.4g/pcs
Packaging quantity	180pcs
Packaging size	300*220*150mm
Packaging weight	1.82kg

Related accessories

- 40 fluent strip flat joint SQ-F15
- 40 Fluent Bar Low Joint SQ-F16

● Used for the transition combination between the wire rod and the locator, providing protection and fastening for the wire rod.

60 Aluminum Fluency Strip Cover



Specifications

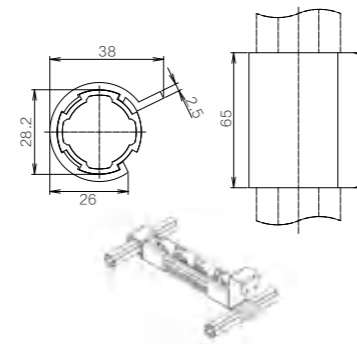
model	SQ-F26
material	ABS
Product unit weight	6.2g/pcs
Packaging quantity	400pcs
Packaging size	300*220*150mm
Packaging weight	2.8kg

Related accessories

- 60 aluminum flat rotating strip SQ-F08
- 60 aluminum flat rotating strip SQ-F09
- 60 aluminum flat rotating strip (small wheel) SQ-F13

● 60 aluminum alloy fluent strip universal protective end cover, used for decoration, protection, sealing, and other functions.

60 Joint Wear Sleeve



Specifications

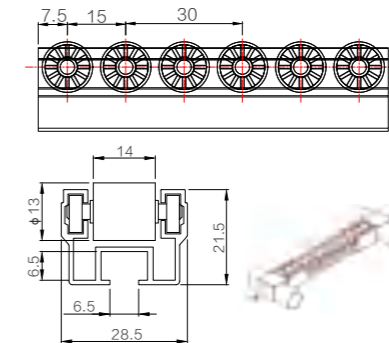
model	SQ-F27
material	PP 18.5g/pcs
Product unit weight	120pcs
Packaging quantity	300*220*150mm
Packaging size	2.5kg
Packaging weight	

Related accessories

- 60 fluent strip flat joint SQ-F18
- 60 Fluent Bar Low Joint SQ-F19
- 60 round fluent strip flat joint SQ-F21
- 60 small wheel fluent bar low joint SQ-F22

● Used for excessive combination of wire rods and locators, providing protection and fastening for wire rods.

Pocket Fluency Bar

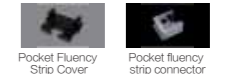


Specifications

model	528g/m
material	4m
Product unit weight	16(set)
packaging size	Galvanized carbon steel+SQE
packaging weight	anodic oxidation

Related accessories

- Pocket Fluency Strip Cover SQ-F57
- Pocket fluency strip connector SQ-B67

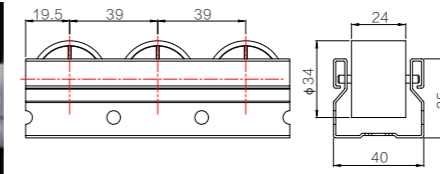


● Used for small workpiece sliding devices or for edge blocking on both sides of the slide.

model

color	Anti static black	yellow
model	SQ-F33	SQ-F34

40 Sheet metal Fluency Bar



Specifications

Product unit weight	1230g/m
Standard length	4m
Product unit weight	10(set)
material	Galvanized carbon steel+PE
Surface Treatment	galvanizing

Related accessories

- 40 sheet metal flat joint SQ-F42
- 40 sheet metal high joint SQ-F43
- 40 sheet metal low joint SQ-F44
- 40 sheet metal bridge flat joint SQ-F45
- 40 sheet metal bridge high joint SQ-F46
- 40 sheet metal flat joint (equipped with 40 profiles) SQ-F47
- 40 sheet metal low joint (equipped with 40 profiles) SQ-F48
- 40 sheet metal bridge flat joint (equipped with 40 profiles) SQ-F49

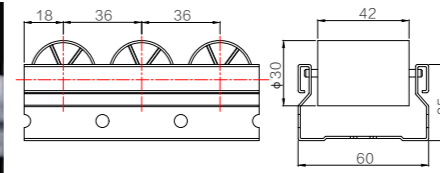


● Used for sliding devices.

model

color	white	Black anti-static
model	SQ-F35	SQ-F36

60 Sheet Metal Fluency Bar

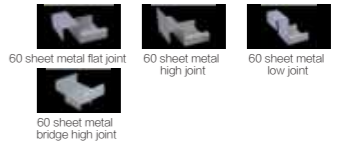


Specifications

Product unit weight	1380g/m
Standard length	4m
Product unit weight	4(set)
material	Galvanized carbon steel+SQE
Surface Treatment	galvanizing

Related accessories

- 60 sheet metal flat joint SQ-F50
- 60 sheet metal high joint SQ-F51
- 60 sheet metal low joint SQ-F52
- 60 sheet metal bridge high joint SQ-F53

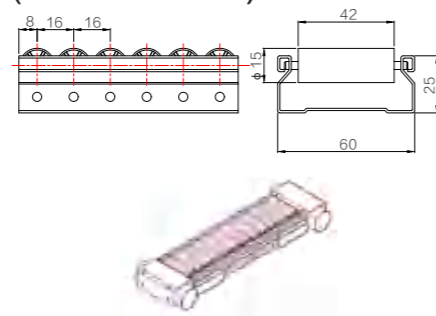
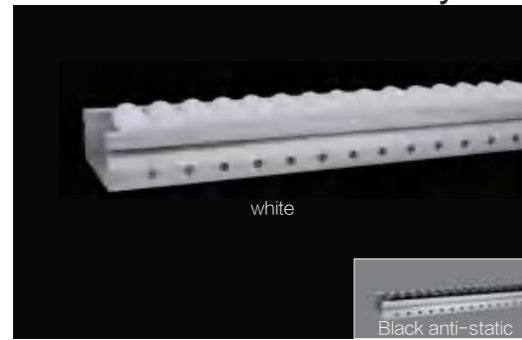


● Used for sliding devices.

model

color	white	Black anti-static
model	SQ-F37	SQ-F38

60 Sheet Metal Fluency Bar (small wheel)



specifications

model	/
Product unit weight	4m
Packaging quantity	4 sets
Packaging size	Roller SQE; Outer frame - galvanized carbon steel
Packaging weight	galvanizing

- Related accessories**
- 60 sheet metal small wheel flat joint SQ-F54
 - 60 sheet metal small wheel high joint SQ-F55
 - 60 sheet metal small wheel low joint SQ-F56

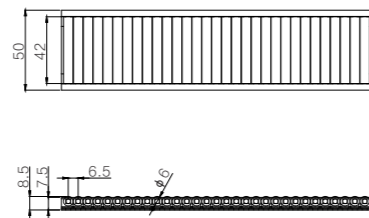
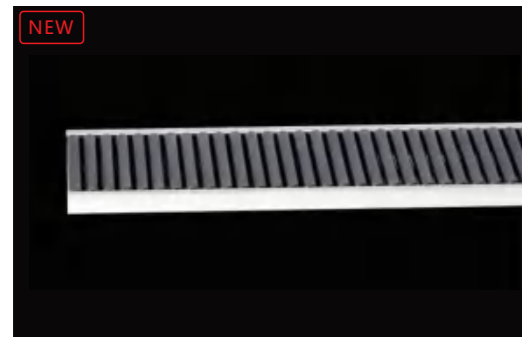


● Used for sliding devices.

model

color	white	Black anti-static
model	SQ-F39	SQ-F40

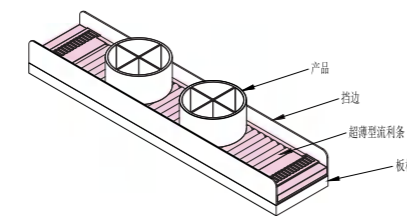
Ultra Thin Fluency Bar



specifications

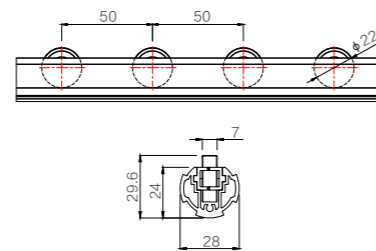
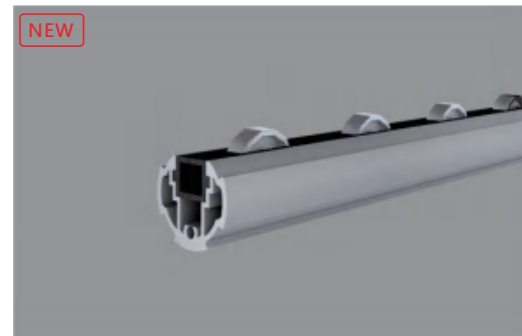
model	SQ-F41
Product unit weight	334g/m
Packaging quantity	4m
Packaging size	10 pieces (set)
Packaging weight	Aluminum alloy+SQE
Surface Treatment	galvanizing

- Related accessories**
- Ultra thin fluency strip cover SQ-F58



● Used for bare feeding of micro and small materials.

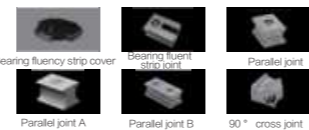
Bearing Fluency Bar



specifications

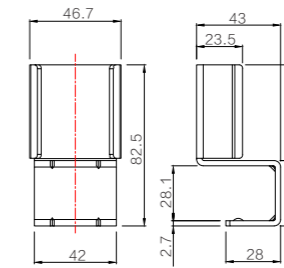
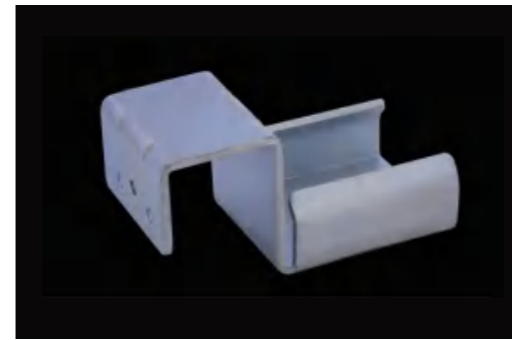
model	SQ-F59
material	780g/meter
Product unit weight	4m
Packaging quantity	8 pieces
Packaging size	AL6005-T6+ABS+bearing steel
Packaging weight	Anodization

- Related accessories**
- Bearing fluency strip cover SQ-F60
 - Bearing fluent strip joint SQ-B64
 - Parallel joint SQ-B03
 - Parallel joint A SQ-B09
 - Parallel joint B SQ-B16
 - 90° cross joint SQ-B04



● Used for returning tooling boards on the return line of long tooling boards, with good sliding performance, low noise, and a minimum smooth sliding angle of less than 1°.

40 Sheet Metal Flat Joint



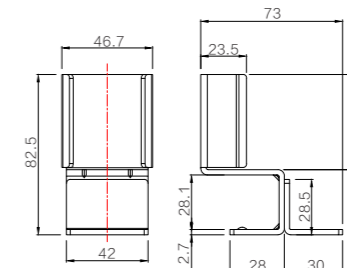
specifications

model	SQ-F42
material	carbon steel
Product unit weight	155g/pcs
Packaging quantity	/
Packaging size	/
Packaging weight	/

- Related accessories**
- 40 sheet metal fluency strips SQ-F35
 - 40 sheet metal fluency strips SQ-F36

● Used in conjunction with 40 sheet metal fluency strips, for product input on fluency strips.

40 Sheet Metal High Joint



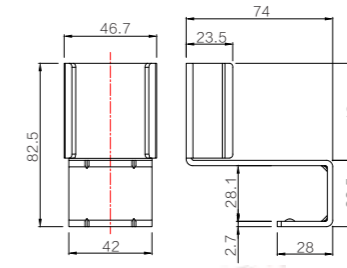
specifications

model	SQ-F43
material	carbon steel
Product unit weight	209g/pcs
Packaging quantity	/
Packaging size	/
Packaging weight	/

- Related accessories**
- 40 sheet metal fluency strips SQ-F35
 - 40 sheet metal fluency strips SQ-F36

● Used in conjunction with 40 sheet metal fluency strips, for product output on fluency strips.

40 Sheet Metal Low Joint



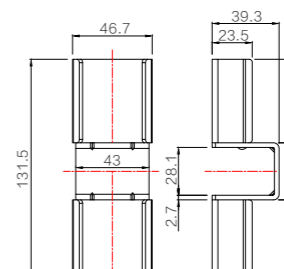
specifications

model	SQ-F44
material	carbon steel
Product unit weight	199g/pcs
Packaging quantity	/
Packaging size	/
Packaging weight	/

- Related accessories**
- 40 sheet metal fluency strips SQ-F35
 - 40 sheet metal fluency strips SQ-F36

● Used in conjunction with 40 sheet metal fluency strips, for product output on fluency strips.

40 Sheet Metal Bridge Flat Joint



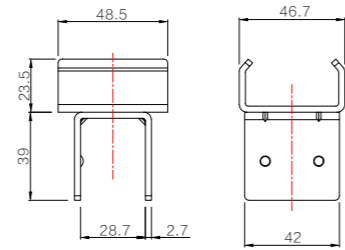
specifications

model	SQ-F45
material	carbon steel
Product unit weight	262g/pcs
Packaging quantity	/
Packaging size	/
Packaging weight	/

- Related accessories**
- 40 sheet metal fluency strips SQ-F35
 - 40 sheet metal fluency strips SQ-F36

● Used in conjunction with 40 sheet metal fluency bars, for the connection of two fluency bars.

40 Sheet Metal Bridge High Joint



■ specifications

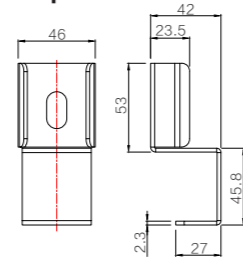
model	SQ-F46
material	carbon steel
Product unit weight	/
Packaging quantity	/
Packaging size	/
Packaging weight	/

■ Related accessories

- 40 sheet metal fluency strips SQ-F35
- 40 sheet metal fluency strips SQ-F36

● Used in conjunction with 40 sheet metal fluency bars, for intermediate support of longer fluency bars.

40 Sheet Metal Flat Joint (with 40 profiles)



■ specifications

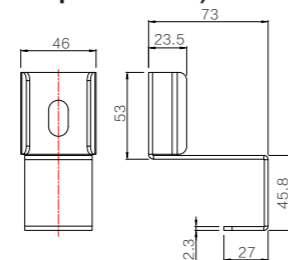
model	SQ-F47
material	carbon steel
Product unit weight	145g/pcs
Packaging quantity	/
Packaging size	/
Packaging weight	/

■ Related accessories

- 40 sheet metal fluency strips SQ-F35
- 40 sheet metal fluency strips SQ-F36

● Used for the connection between the 40 sheet metal fluency strip and the 40 * 40 aluminum profile, used for the product input end on the fluency strip.

40 Sheet Metal Flat Joint (with 40 profiles)



■ specifications

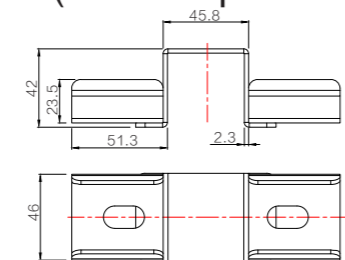
model	SQ-F48
material	carbon steel
Product unit weight	169g/pcs
Packaging quantity	/
Packaging size	/
Packaging weight	/

■ Related accessories

- 40 sheet metal fluency strips SQ-F35
- 40 sheet metal fluency strips SQ-F36

● Used for the connection between 40 sheet metal fluency strips and 40 * 40 aluminum profiles, used for the output end of products on fluency strips.

40 Sheet Metal Bridge Flat Joint (with 40 profiles)



■ specifications

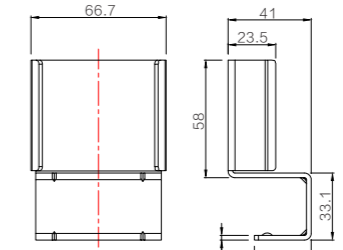
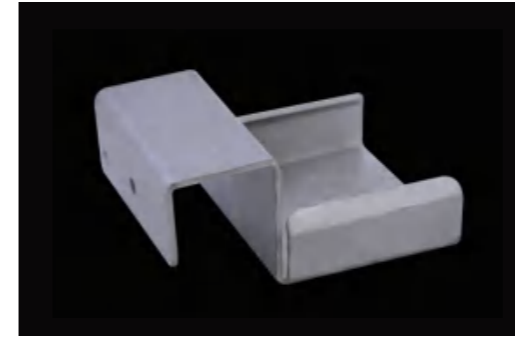
model	SQ-F49
material	carbon steel
Product unit weight	261g/pcs
Packaging quantity	/
Packaging size	/
Packaging weight	/

■ Related accessories

- 40 sheet metal fluency strips SQ-F35
- 40 sheet metal fluency strips SQ-F36

● Used for the connection between 40 sheet metal fluency strips and 40 * 40 aluminum profiles, for the connection of two fluency strips.

60 Sheet Metal Flat Joint



■ specifications

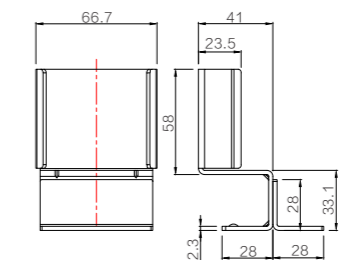
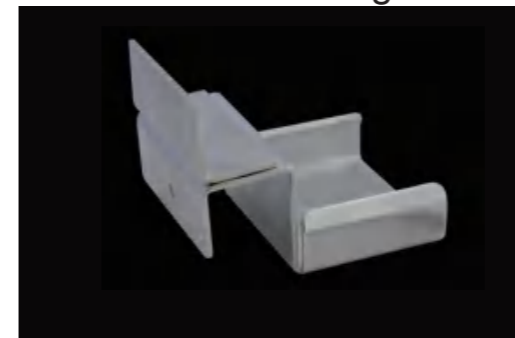
model	SQ-F50
material	carbon steel
Product unit weight	206g/pcs
Packaging quantity	/
Packaging size	/
Packaging weight	/

■ Related accessories

- 60 sheet metal fluency strips SQ-F37
- 60 sheet metal fluency strips SQ-F38

● Used in conjunction with 60 sheet metal fluency strips, for product input on fluency strips.

60 Sheet Metal High Joint



■ specifications

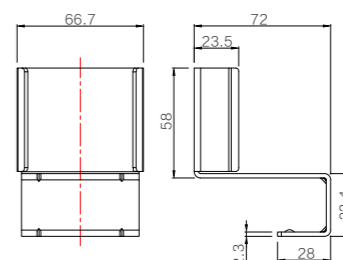
model	SQ-F51
material	carbon steel
Product unit weight	258g/pcs
Packaging quantity	/
Packaging size	/
Packaging weight	/

■ Related accessories

- 60 sheet metal fluency strips SQ-F37
- 60 sheet metal fluency strips SQ-F38

● Used in conjunction with 60 sheet metal fluency strips, for product output on fluency strips.

60 Sheet Metal Low Joint



■ specifications

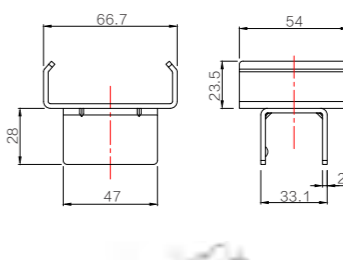
model	SQ-F52
material	carbon steel
Product unit weight	267g/pcs
Packaging quantity	/
Packaging size	/
Packaging weight	/

■ Related accessories

- 60 sheet metal fluency bars SQ-F37
- 60 sheet metal fluency bars SQ-F38

● Used in conjunction with 60 sheet metal fluency strips, for product output on fluency strips.

60 Sheet Metal Bridge High Joint



■ specifications

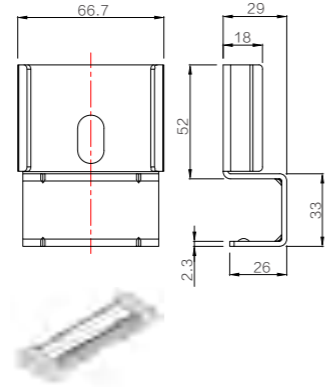
model	SQ-F53
material	carbon steel
Product unit weight	/
Packaging quantity	/
Packaging size	/
Packaging weight	/

■ Related accessories

- 60 sheet metal fluency bars SQ-F37
- 60 sheet metal fluency bars SQ-F38

● Used in conjunction with 60 sheet metal fluency bars, for intermediate support of longer fluency bars.

60 Sheet Metal Small Wheel Flat Joint



■ specifications

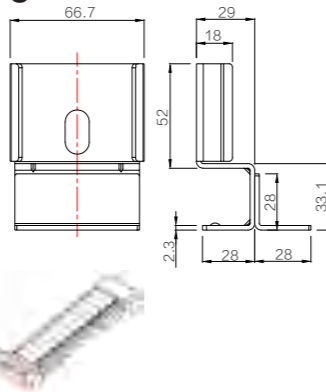
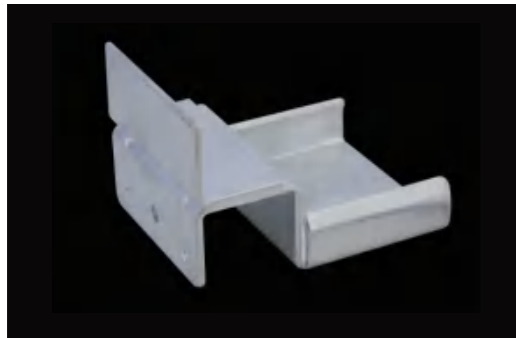
model	SQ-F54
material	carbon steel
Product unit weight	164g/pcs
Packaging quantity	/
Packaging size	/
Packaging weight	/

■ Related accessories

60 sheet metal fluency strip (small wheel) SQ-F39
60 sheet metal fluency strip (small wheel) SQ-F40

● Used in conjunction with 60 sheet metal fluency strips (small wheels), for product input on fluency strips.

60 Sheet Metal Small Wheel High Joint



■ specifications

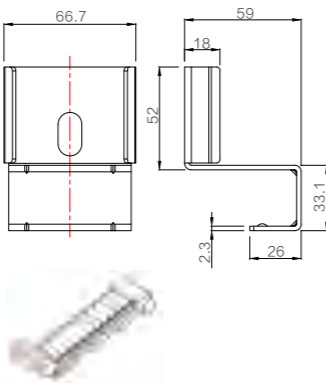
model	SQ-F55
material	carbon steel
Product unit weight	219g/pcs
Packaging quantity	/
Packaging size	/
Packaging weight	/

■ Related accessories

60 sheet metal fluency strip (small wheel) SQ-F39
60 sheet metal fluency strip (small wheel) SQ-F40

● Used in conjunction with 60 sheet metal fluency strips (small wheels), for the output end of products on fluency strips.

60 Sheet Metal Small Wheel Low Joint



■ specifications

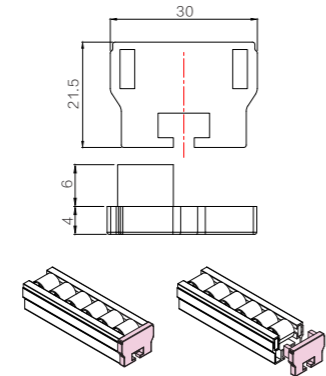
model	SQ-F56
material	carbon steel
Product unit weight	/
Packaging quantity	/
Packaging size	/
Packaging weight	/

■ Related accessories

60 sheet metal fluency strip (small wheel) SQ-F39
60 sheet metal fluency strip (small wheel) SQ-F40

● Used in conjunction with 60 sheet metal fluency strips (small wheels), for the output end of products on fluency strips.

Pocket Fluency Strip Cover



■ specifications

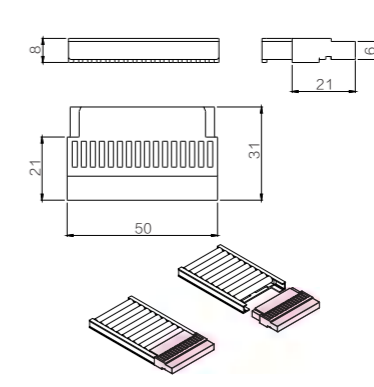
model	SQ-F57
material	PVC
Product unit weight	/
Packaging quantity	/
Packaging size	/
Packaging weight	/

■ Related accessories

Pocket Fluency Bar SQ-F33
Pocket Fluency Bar SQ-F34
Pocket fluency strip connector SQ-B67

● Used for protection and decoration of pocket fluency strip ends.

Ultra Thin Fluency Strip Cover



■ specifications

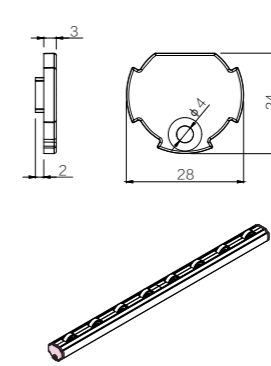
model	SQ-F58
material	PVC
Product unit weight	/
Packaging quantity	/
Packaging size	/
Packaging weight	/

■ Related accessories

Ultra thin fluency bar SQ-F41

● Used for protection and decoration of ultra-thin and fluent strip ends.

Bearing fluency strip cover



■ specifications

model	SQ-F60
material	ABC
Product unit weight	1.3g/pcs
Packaging quantity	/
Packaging size	/
Packaging weight	/

■ Related accessories

Bearing fluency strip SQ-F59

● Installed at both ends of the bearing fluent strip for limit and end protection.